

SILVACO

Software Installation Guide

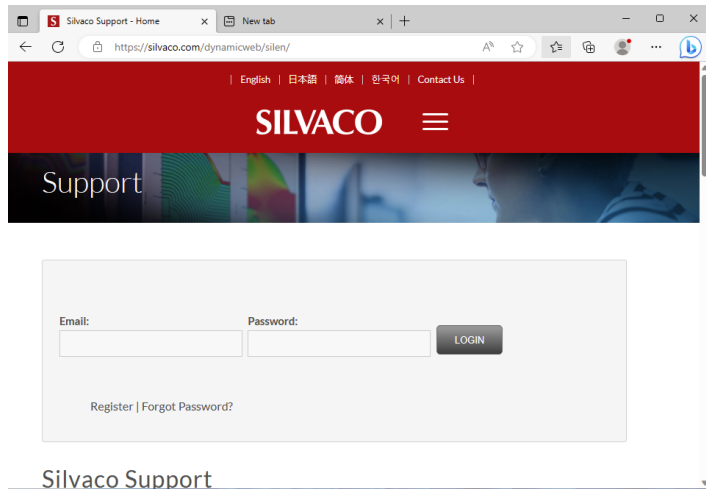
2025.08

Table of Contents

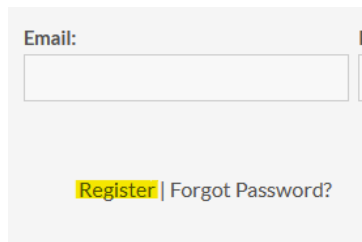
1. Registering your Online Silvaco Account	2
2. Requesting Software Download Access	3
3. Installing the Baseline Software on Linux.....	6
4. Installing the Baseline Software on Windows	9
5. Applying Software Updates on Linux	122
6. Applying Software Updates on Windows.....	133
7. License Server Setup	155
FlexLM License Server	155
Linux - FlexLM.....	155
Windows - FlexLM	188
SFLM License Server.....	222
Linux - SFLM.....	223
Windows - SFLM	223
Installing SFLM License File	288
8. Installation of Viso.....	311
9. Installation of Jivaro .bin package	333
10. Installation of CellForge	366
11. Installation of Viola	411
12. Installation of PEX Certify.....	444
13. Installation of PEX Certify(.SSU)	454
14. Installation of Visolyze	455
15. Installation of Visolyze (.SSU)	465
16. FAQs	477
Linux Standard Firewall (firewall):	500
Windows standard firewall (Defender):	511
FlexLM with Firewall.....	51
Q11: How to open PowerShell with Admin rights (Windows)?	522
17. FlexLM Utility Commands FAQ.....	522
18. SFLM Utility Command FAQ	54
19. Licensing daemon changes for FlexLM	577

Registering your Online Silvaco Account

1. Go to Support > Download or [click here](#).



2. Click Register.



3. Complete the form using your company or institution contact information and email address.

Register

*Indicates a required field.

First Name

Last Name

Email Address

Email must be a valid Corporate, University, Government or related agency email address. No free email addresses permitted.

Company Name

Job Title

Country
select

Receive Silvaco updates by email:

Your password will be emailed to you.

The accuracy of this information ensures you have full and up to date access to Silvaco products as well as useful technical information.

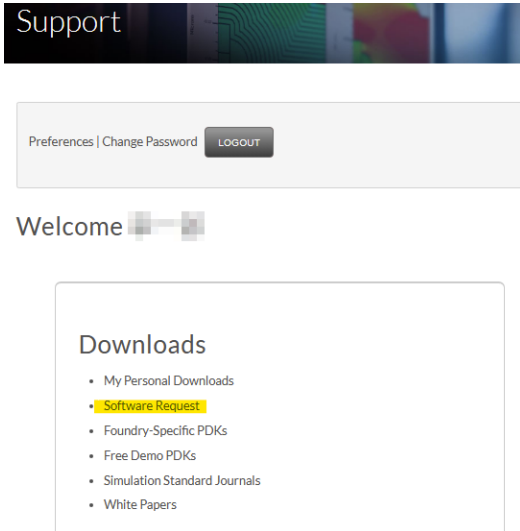
4. Once registration is approved, a temporary password will be issued. You may then change this password. Save your login information as you will need it for future software updates.

Silvaco Software and License Installation Instructions

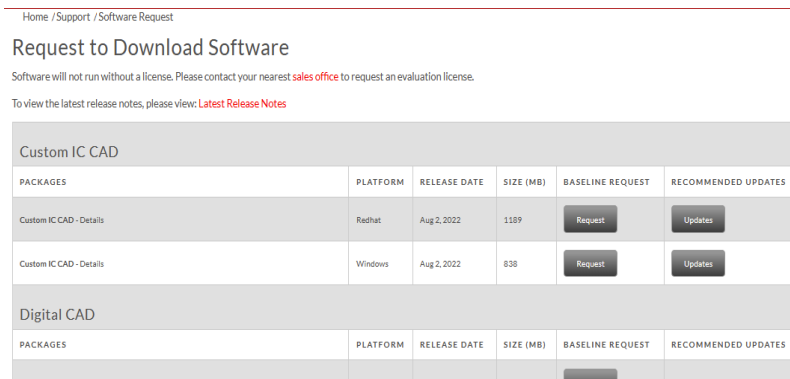
Requesting Software Download Access

All Silvaco software is delivered by direct download from the Silvaco website.

1. Go to Support > Download or [click here](#).
2. Login with your Silvaco account credentials.



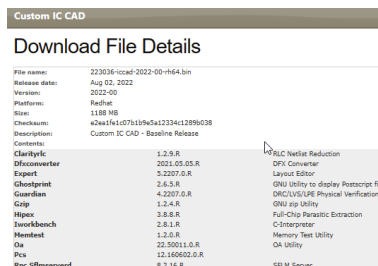
3. Go to Downloads > Software Request.



4. Locate the Silvaco product package needed for the requisite operating system.

PACKAGES	PLATFORM	RELEASE DATE	SIZE (MB)	BASELINE REQUEST	RECOMMENDED UPDAT
Custom IC CAD - Details	Redhat	Aug 2, 2022	1189	Request	Updates

- o There is a "Details" link on each package that details the components of each package.



Silvaco Software and License Installation Instructions

5. Once identified, click Request.

PACKAGES	PLATFORM	RELEASE DATE	SIZE (MB)	BASELINE REQUEST	RECOMMENDED UPDAT
Custom IC CAD - Details	Redhat	Aug 2, 2022	1189	Request	Updates

6. On the next page, fill out the request form. Include a general description of the end use of the software (technology application, and purpose).

- This is a requirement; any ambiguity or inaccuracy may delay software delivery.

Software Request Form

Name	<input type="text"/>
Email Address	<input type="text"/>
Company Name	<input type="text"/>
Tool of Interest	iccad
Version	2022-09
Platform	Redhat
Intended Destination	Select
Intended Use	<input type="text"/>
Explain Intended Use	<input type="text"/>
Go Back To Previous Page Submit	

7. Once confirmed, download access will be granted and an email will be sent with a link to download the requested software.

NOTE: Be aware the following tools have their own unique installation procedures:

- Jivaro
- Viso
- Alps
- Cello
- Viola

Follow the respective individual installation and licensing instructions in this document.

Silvaco Software and License Installation Instructions

Ensure you are logged in to your system as a user with root/sudo privileges.

1. Before following this Installation Guide, check that these third-party packages are installed:
 - glibc.i686
 - libgcc.i686
 - libstdc++.i686
 - zlib.i686
 - xorg-x11-fonts-75dpi.noarch
 - xorg-x11-fonts-misc.noarch

With the root user account, you can install the above packages in a terminal as shown:

- yum install glibc.i686 libgcc.i686 libstdc++.i686
- yum install zlib.i686
- yum install xorg-x11-fonts-75dpi.noarch xorg-x11-fonts-misc.noarch

NOTE: For the licensing package to run, make sure that you have redhat-lsb-core package present and installed. Follow your Linux OS guidance on how to install redhat-lsb-core package, installation commands can be different for each OS.

For Ubuntu Linux, the following directory: /usr/tmp has to be created manually for the license package.

2. Ensure the products are supported by your chosen operating system. [Click here for more details.](#)
3. Once approved for download, a link to the download site will be emailed to you. It will also be available on the Silvaco website (Support > My Downloads). Click the Download button to access the package.

My Downloads

Requests					
No requests available.					
Baseline Downloads					
FILE NAME	VERSION	PLATFORM	RELEASE DATE	SIZE	DOWNLOAD
11344-tool_suite-2023-01-8648.run	2023-01	Redhat	Apr 6, 2023	472.6 MB	Download

Silvaco Software and License Installation Instructions

Installing the Baseline Software on Linux

Ensure the products you wish to run are supported by your chosen operating system. [Click here for more details.](#)

NOTE: Licensing software must be installed on both machines in case of remote access to the license server from the application server.

Once approved for download, a link to the download site will be emailed to you. It will also be available on the Silvaco website (Support > My Downloads). Click the Download button to access the package.

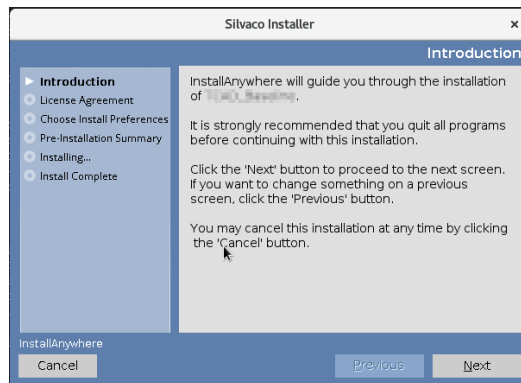
1. From the terminal window, execute the .bin file:

```
# bash ./<File Name>.bin
```

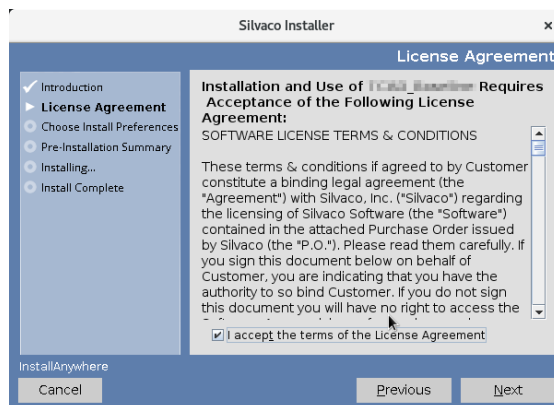
If running the baseline package file with the **sudo** command as a normal user:

```
% sudo bash ./<File Name>.bin
```

2. An installation wizard will launch. Follow the instructions on screen.

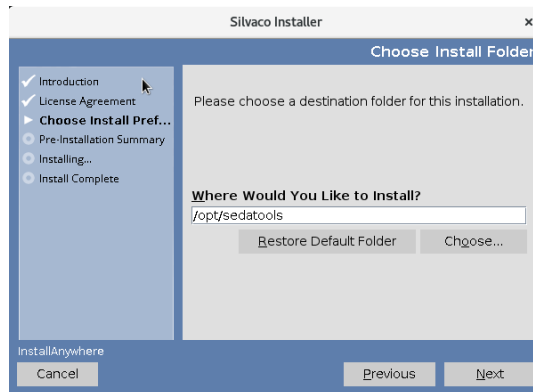


3. Read and accept the terms of the License Agreement

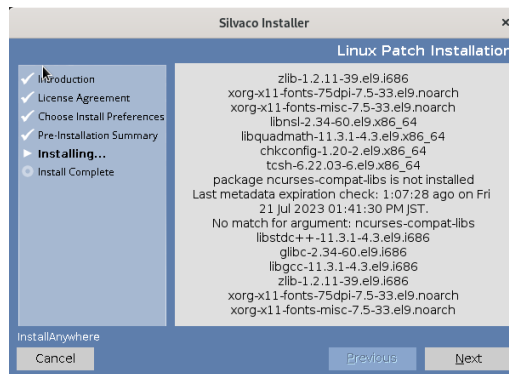


Silvaco Software and License Installation Instructions

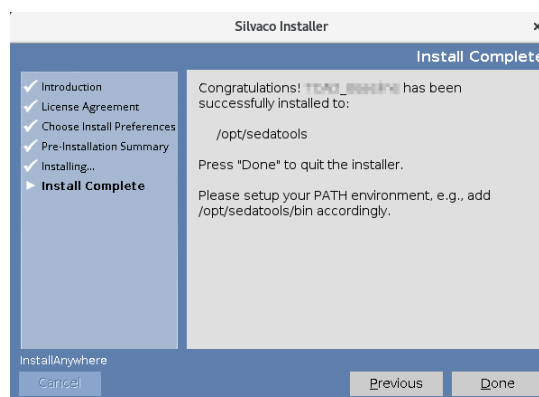
4. Default installation location for Linux: /opt/sedatools/



5. Check the Linux Patch Installation status and click Next button.



6. To confirm that the installation is successfully completed, go to the installation location (set in the Installation Wizard). If the location exists and contains folders, then the installation is successful.



Silvaco Software and License Installation Instructions

On Unix and Linux machines, you must set an environment variable in the terminal. The two most common Unix terminal shells are the C-shell and the Bourne-Again (Bash) shell. In these cases, you need the following changes. C-shell and test users should add the following to their .cshrc file:

```
set path = ($path:q /<installdir>/bin)
```

Bash, sh (Bourne shell) and ksh users should add the following to their .profile file:

```
PATH="$PATH":"/<installdir>/bin"
```

```
export PATH=/<installdir>/bin:$PATH
```

Silvaco Software and License Installation Instructions

Installing the Baseline Software on Windows

Ensure the products you wish to run are supported by your chosen operating system. [Click here for more details.](#)

NOTE: Licensing software must be installed on both machines in case of remote access to the license server from the application server.

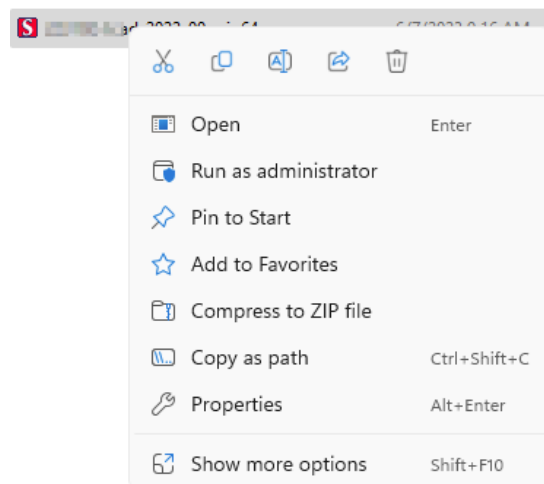
Ensure you are logged into your system as an Administrator or have Administrator rights.

1. Once approved for download, a link to the download site will be emailed to you. It will also be available on the Silvaco website (Support > My Downloads). Click the Download button to access the package.

My Downloads

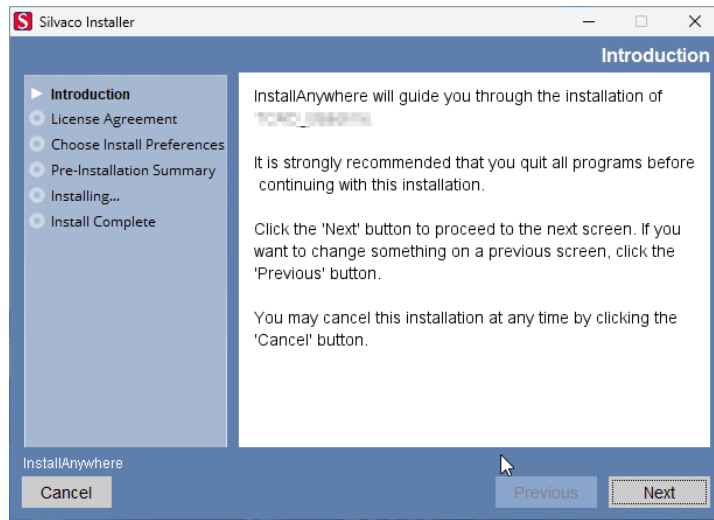
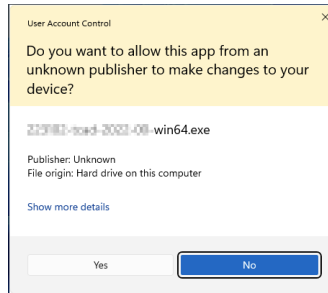
Requests					
No requests available.					
Baseline Downloads					
FILE NAME	VERSION	PLATFORM	RELEASE DATE	SIZE	DOWNLOAD
11344-tool_suite-2023-01-0443.run	2023-01	Redhat	Apr 4, 2023	472.6 MB	Download

2. Right click on the Silvaco Installer Icon and click “Run as administrator” on the newly opened menu to run the executable. Follow the instructions on the installation wizard.

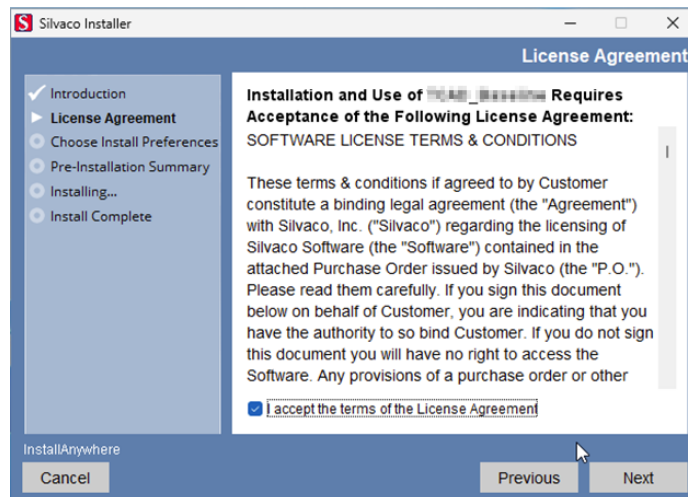


If you see the “User Account Control” dialog box, click the “Yes” button.

Silvaco Software and License Installation Instructions

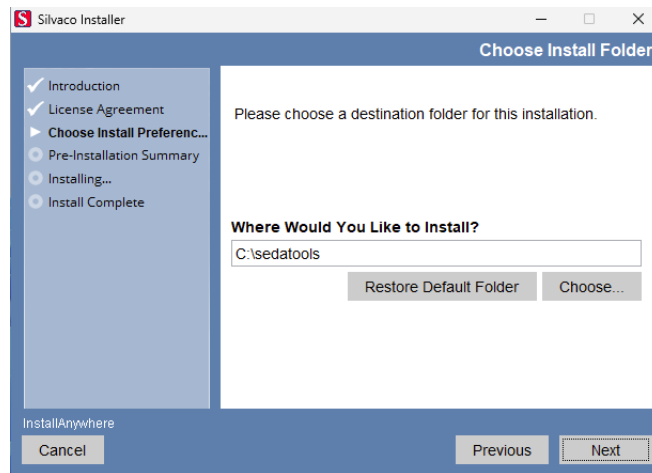


3. Read and accept the terms of the License Agreement.

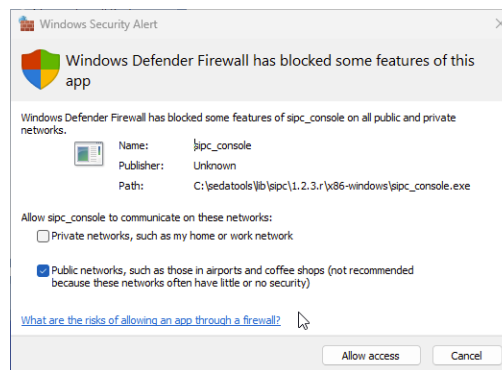


4. The default installation location in Windows is C:\sedatools.

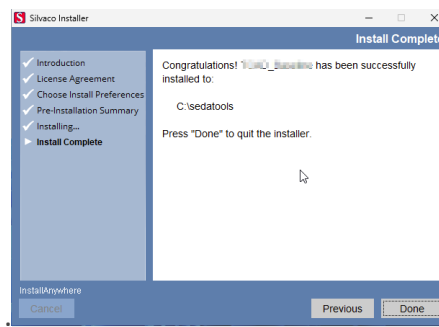
Silvaco Software and License Installation Instructions



If you see a Windows Defender warning about "spic_console.exe", approve it by clicking the "Allow Access" button.



5. Once the installation is complete, reboot the system.



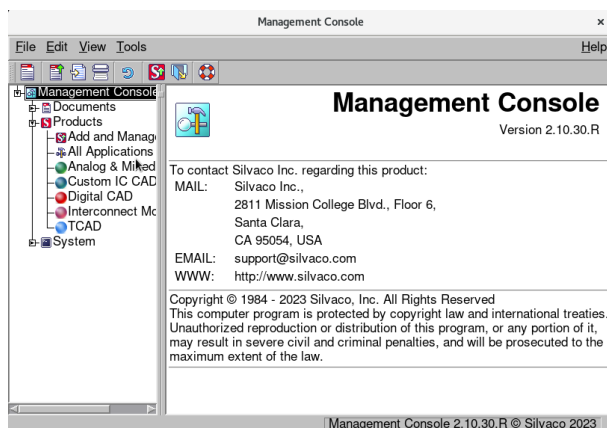
6. To confirm that the installation is successfully completed, go to the installation location (set in the Installation Wizard). If the location exists and contains folders, then the installation was successful.

Applying Software Updates on Linux

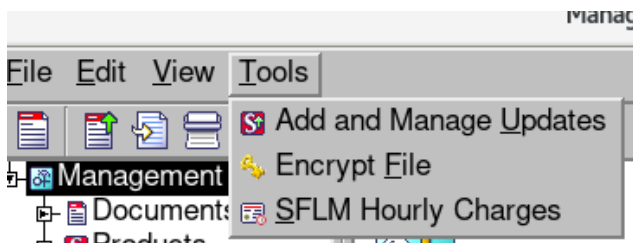
Software updates may be applied to an existing Silvaco installation. The update files have a .ssu file type. This update will add new versions of tools to your existing installation area. Your original versions will not be deleted and will remain accessible to users.

NOTE: Make sure you are installing the correct software update package to your baseline software.

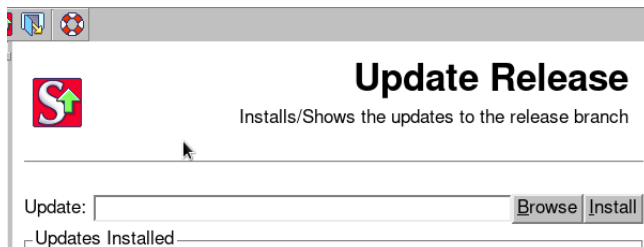
1. In a Linux terminal type:
 - o `<Install_Directory>/bin/sman`



2. Within the SMAN utility:
 - o In the left pane go to Tools > Add and Manage Updates.



- o Click Browse and locate the .ssu file.



- o Click Install.
- o If prompted to update links or shortcuts, click Yes.

Applying Software Updates on Windows

Software updates may be applied to an existing Silvaco installation. The update files have a .ssu file type. This update will add new versions of tools to your existing installation area. Your original versions will not be deleted and will remain accessible to users.

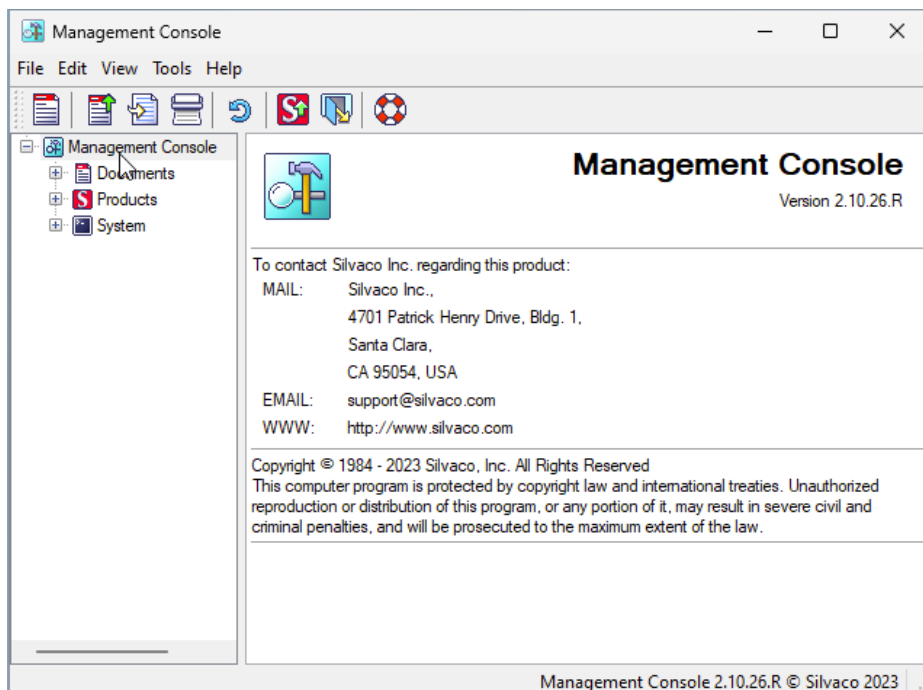
NOTE: Make sure you are installing the correct software update package to your baseline software.

1. In Windows Command Prompt or PowerShell enter:

```
<Install_Directory>\exe\sman
```

Replace <Install Directory> with the Silvaco Install Directory.

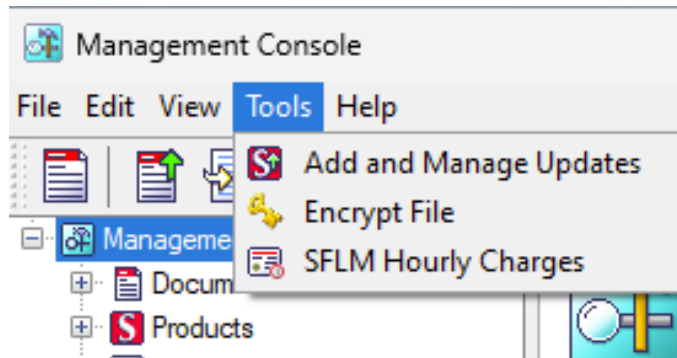
2. You may also use the Silvaco Shortcuts folder and run “Management Console” within the folder.



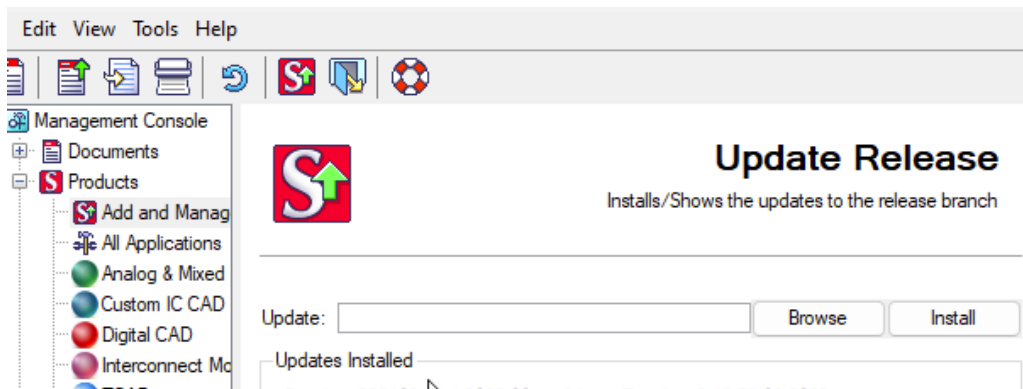
Silvaco Software and License Installation Instructions

3. Within the SMAN utility:

- In the left pane go to Tools-> Add and Manage Updates.



- Click Browse and locate the .ssu file.



- Click Install.
 - If prompted to update links or shortcuts, click Yes.

License Server Setup

Licensing server software is not included in the application installation package file. You may obtain this installation package from the Downloads page on the Silvaco website.

License server overview:

- Silvaco provides an SFLM License Server and a FlexLM Licensing Server
- SFLM is a Silvaco developed, owned, and maintained licensing system
- FlexLM is provided by a third-party licensing system
- Most Silvaco applications support both licensing systems
- Silvaco recommends using a FlexLM licensing server whenever possible

Compatibility varies depending on the product used and how it is used. Consult with the person in charge before making your selection.

FlexLM License Server

Installing the licensing package:

To use a FlexLM license to access Silvaco tools, request and download the Licensing baseline package available on the Silvaco website, along with the Silvaco product downloads.

Linux - FlexLM

- Generate a FlexLM HostID

A HostID is required by Silvaco to generate a license, follow the steps below to generate this HostID.

- In a Linux terminal run the command:

o `<Install_Directory>/bin/lmhostid`

Replace <Install Directory> with Silvaco Install directory.

For example, if the installation directory is “/opt/sedatools”:

`/opt/sedatools/bin/lmhostid`

This command will output a HostID number. Send the HostID to Silvaco for a license to be issued.

Finding host IDs on machines with multiple network adapters.

If the machine where your product is installed or where the license server is hosted has multiple network adapters, running lmhostid command returns one host ID for each network adapter.

NOTE: Only one of the host IDs must be used. Usually, it is the first one that represents a physical network adapter.

Silvaco Software and License Installation Instructions

2. Check FlexLM Version

```
Run <Install Directory>/bin/flexlm -WV
```

For example, if the install directory is “/opt/sedatools”

```
/opt/sedatools/bin/flexlm -WV
```

3. Modifying FlexLM license

Once the FlexLM license file is received, it must be manually modified.

```
SERVER your_server 00e59078086 27000
daemon simucad

#License
FEATURE A_Silvaco_Apps simucad xxxxxx-dec-2099 X 99F8B24D0X6E3
:
:
```

- Open the license file issued by Silvaco.
- Find and replace the (your_server) field with the name of the machine.
- Find the DAEMON/daemon or VENDOR/vendor line and insert the path to the simucad or ngld daemon there. The path can be found in the lib folder of the Silvaco installation directory.

“daemon simucad <Install_Directory>/lib/flexlm/<Version>/x86_64-linux/simucad”

Or

“vendor ngld <Install_Directory>/lib/flexlm/<Version>/x86_64-linux/ngld”

Or

“vendor edxactd <Install_Directory>/lib/flexlm/<Version>/x86_64-linux/edxactd”

Replace <Install Directory> with the Silvaco install directory and <Version> with FlexLM version.

For example, if the machine name is “server1.silvaco.com”, the install directory is “/opt/sedatools”, and the FlexLM version is “11.16.2.R” (result of step 2), then your license file header will look like this:

```
SERVER server1.silvaco.com 00e59078086 27000
daemon simucad /opt/sedatools/flexlm/11.16.2.R/x86_64-linux/simucad

#License
FEATURE A_Silvaco_Apps simucad xxxxxx-dec-2099 X 99F8B24D0X6E3
:
:
```

Silvaco Software and License Installation Instructions

NOTE: On Linux systems, it is strongly recommended that lmgrd be run as a non-privileged user (not root).

3. Start the FlexLM server with the license file

```
<Install_Directory>/bin/lmgrd -c <license file> -l <log file>
```

Replace to <Install Directory> with the Silvaco installation directory, <license file> with the full path name of license file, and <log file> with full path name of log file.

For example, if the license file name is /opt/sedatools/etc/license.lic

and the log file name is /opt/sedatools/var/license.log, then the start command will be:

```
/opt/sedatools/bin/lmgrd -c /opt/sedatools/etc/license.lic -l /opt/sedatools/log/license.log
```

NOTE: FlexLM does not have automatic startup functionality. Therefore, you need to manually start the license server program each time the machine is booted or restarted. If you want to enable automatic startup, you can add it to /etc/rc.local or create a systemd unit. It is possible to accomplish by using a flexlm install script in /sedatools/updates folder that will prompts you to create a system unit file or use FlexLM FAQs to create it manually.

4. Connecting to a FlexLM server

Ensure the following environmental variables are set.

In a Linux terminal this can be done with the “export” command if using the bash shell or “setenv” command if using csh.

For example, if the license file is /opt/sedatools/etc/license.lic:

- export LM_LICENSE_FILE=/opt/sedatools/etc/license.lic
- export SFLM_FLEXLM=1

SFLM_FLEXLM is an environment variable specifying SFLM and FlexLM priorities (if the application supports both licensing servers).

0: Do not use FlexLM, only use SFLM

1: Only use FlexLM

By default, the application first attempts to obtain a license from SFLM, and then if that fails, attempts to obtain license from FlexLM.

LM_LICENSE_FILE is a common FlexLM environment variable. If you want to affect only the tools that operate with the vendor daemon “**simucad**” (e.g., TCAD/EDA tools), you can use the environment variable **SIMUCAD_LICENSE_FILE** instead of **LM_LICENSE_FILE**.

Similarly, if you want to affect only the tools (e.g. Jivaro, Viso) that operate with the vendor daemon “**exactd**”, you can use the environment variable **EDXACT_LICENSE_FILE** instead of **LM_LICENSE_FILE**. We recommend using **SIMUCAD_LICENSE_FILE** in all cases. Each FEATURE line in the license file describes the vendor daemon to be used.

Checking .flexlmrc caching file

It is important to make sure that you have ~/.flexlmrc file adjusted (or removed if not used) with a correct license server. It can cache any previous license server values.

5. Confirming that the FlexLM licenses are installed

Execute the command below in a terminal:

```
<Install_Directory>/bin/lmstat -a
```

For example, if the install directory is “/opt/sedatools”:

```
/opt/sedatools/bin/lmstat -a
```

If the firewall software in the license server machine is enabled, refer to [‘FlexLM with Firewall’](#) and [‘LinuxStandard Firewall’](#) in [‘Q10: How to configure Firewall settings’](#).

If you want to set FlexLM to start automatically, change the command in step 3 to /etc/rc.local.

Windows - FlexLM

1. Generate a FlexLM HostID

A HostID is required by Silvaco to generate a license, follow the steps below to generate your HostID.

In the Windows Command Prompt or PowerShell, run the lmutil command in the FlexLM folder found in the Silvaco installation directory

```
<Install_Directory>\libflexlm\<Version Number>\x86_64-windows\lmutil lmhostid -n
```

Replace <Install directory> with installation directory name and <Version Number> with the FlexLM version number.

For example, if the install directory is C:\sedatools and Version 11.14.2.R:

```
C:\sedatools\lib\flexlm\11.14.2.R\x86_64-windows\lmutil lmhostid -n
```

This command will output a HostID number. Send the HostID to Silvaco for a license to be issued.

2. Modifying the FlexLM license

Once the FlexLM license file is received, it must be manually modified.

Silvaco Software and License Installation Instructions

```
SERVER your_server 00e59078086 27000
daemon simucad

#License
FEATURE A_Silvaco_Apps simucad xxxxxx-dec-2099 X 99F8B24D0X6E3
:
```

- Open the license file issued by Silvaco.
- Find and replace the “your_server” field with the name of the machine.
- Find the DAEMON/daemon or VENDOR/vendor line and insert the path to the **simucad** daemon, found in the lib folder of the Silvaco installation directory.
daemon simucad **<Install_Directory>\lib\flexlm\<Version>\x86_64-windows\simucad**
For example, if the machine name is “server1.silvaco.com”, the install directory is “c:\sedatools”,
FlexLM version is 11.16.2.R, and the vendor daemon is “simucad”:

```
SERVER server1.silvaco.com 00e59078086 27000
daemon simucad c:\sedatools\lib\flexlm\11.16.2.R\x86_64-windows\simucad

#License
FEATURE A_Silvaco_Apps simucad xxxxxx-dec-2099 X 99F8B24D0X6E3
:
```

3. Start the FlexLM Server with the license file

- Open PowerShell with admin rights.

Refer to [Q11: How to Open PowerShell with Admin Rights?](#) If needed.

- Change the current directory to the FlexLM folder found in the Silvaco installation directory:

```
cd <Install_Directory>\lib\flexlm\<Version_Number>\<OS_Version>
```

Example:

```
cd C:\sedatools\lib\flexlm\11.16.2.R\x86_64-windows\
```

- Then run the run the command:
./lmgrd -c <License file> -l <Log file>
Replace <License file> with full path of license file, <Log file> with full path of log file.
For example, if the license file path is “C:\sedatools\etc\license.lic” and log file path is: C:\sedatools\var\flexlm.log:

Silvaco Software and License Installation Instructions

```
.\lmgrd -c C:\sedatools\etc\license.lic -l C:\sedatools\var\flexlm.log
```

4. Connecting to a FlexLM server

Ensure the following environmental variables are set:

- In a Windows Command Prompt or PowerShell users can use the SETX command to set environmental variables: LM_LICENSE_FILE (or SIMUCAD_LICENSE_FILE).
 - setx LM_LICENSE_FILE "c:\sedatools\etc\license.lic"
 - setx SFLM_FLEXLM "1"

SFLM_FLEXLM is an environment variable specifying SFLM and FlexLM priorities. (If application supports both Licensing servers.)

0: Do not use FlexLM, only use SFLM

1: Only use FlexLM.

5. Confirming that the FlexLM licenses are installed

Execute the command below Windows Command Prompt/PowerShell

```
<Install Directory>\lib\flexlm\<Version Number>\x86_64_windows\lmutil lmstat -a
```

Replace <Install Directory> with Silvaco Install directory and <Version Number> with FlexLM version.

For example, if the install directory is c:\sedatools and the version number is 11.16.2.R:

```
C:\sedatools\lib\flexlm\11.16.2.R\x86_64-windows\lmutil lmstat -a
```

If the firewall software in license server machine is enabled, refer to [FlexLM with Firewall](#) and [Windows Standard Firewall](#) in [Q10: How to configure FireWall settings?](#)

If you want to set FlexLM to start automatically, configure service with LM Tools:

1. Start LM Tools

```
<Install Directory>\lib\flexlm\<Version>\x86_64-windows\lmtools.exe
```

For example, if the install directory is c:\sedatools and the version number is 11.16.2.R:

```
C:\sedatools\lib\flexlm\11.16.2.R\x86_64-windows\lmtools
```

2. Open the Configure tab

3. Fill out the parameter fields

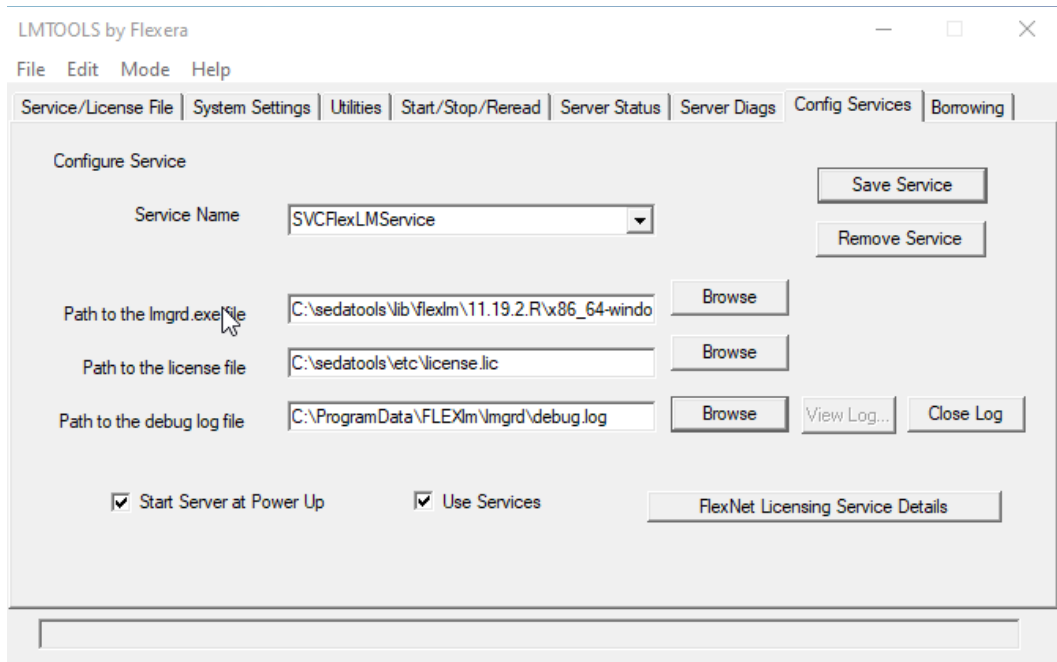
Fill out the following fields with the full path:

Silvaco Software and License Installation Instructions

- Path to the lmgrd.exe file
- Path to license file
- Path to the debug log file (use the default)

Next check the “Start Server at Power Up” and “Use Service” checkboxes.

For example, if the install directory is C:\sedatools, the FlexLM version is 11.19.2.R, and the license file name is C:\sedatools\etc\license.lic:



Silvaco Software and License Installation Instructions

SFLM License Server

Installing and starting SFLM server

If an SFLM license server has not yet been installed, follow these instructions. The SFLM server hosts floating licenses for the Silvaco tools. Installation must be performed with root access or admin privileges.

Linux - SFLM

1. Open Linux terminal
2. Run SFLM license service installation command with admin rights
`sudo <Install_Directory>/bin/sflm -install`

Example

Installation directory: /opt/sedatools

```
sudo /opt/sedatools/bin/sflm -install
```

Windows - SFLM

1. Open PowerShell with admin rights.
Refer to **Q11: How to Open PowerShell with Admin Rights?** in FAQ if needed.
2. Run SFLM service installation command.

```
<Install_Directory>\exe\sflm -install
```

Example

Installation Directory: C:\sedatools

```
C:\sedatools\exe\sflm -install
```

If the firewall software in license server machine is enabled, refer to **Firewall settings for SFLM (Linux)** or **Firewall settings for SFLM(Windows)**.

In either case, the SFLM license server installation will begin. You will be prompted to set a password. This password will be used as the administrator password within the SFLM server. After installation, reboot the server.

Silvaco Software and License Installation Instructions

1. Viewing SFLM server web page

- Viewing the SFLM server page using the SMAN Utility:

After installation of the SFLM server, users can access the server through the SMAN Utility

Linux

- In a Linux terminal enter:
`<Install_Directory>/bin/sman`

Replace <Install Directory> with Silvaco install Directory.

For example, if the install directory is /opt/sedatools:

```
/opt/sedatools/bin/sman
```

Windows

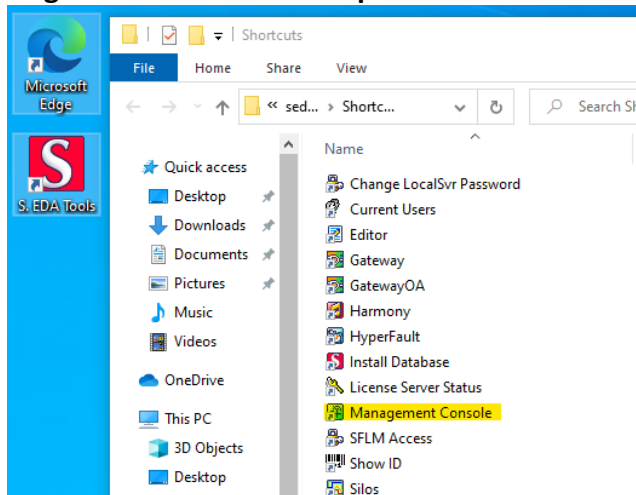
- In Windows PowerShell enter the command below or Click “Management Console” in the Desktop Shortcut folder.
`<Install_Directory>\exe\sman`

Replace <Install Directory> with Silvaco install directory.

For example, if the install directory is C:\sedatools:

```
C:\sedatools\exe\sman
```

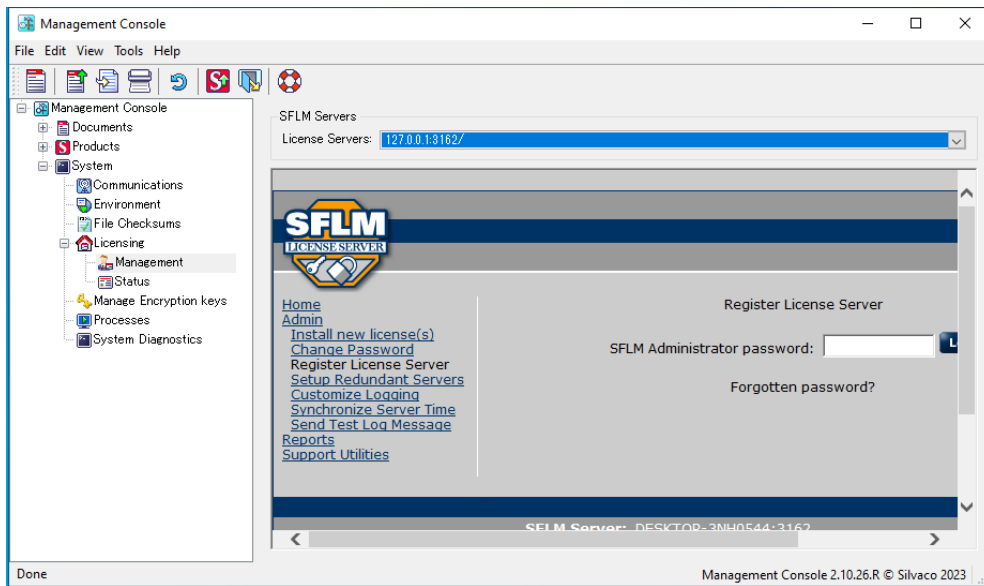
The Management Console Desktop Shortcuts in “S.EDA Tools” Shown on the Desktop



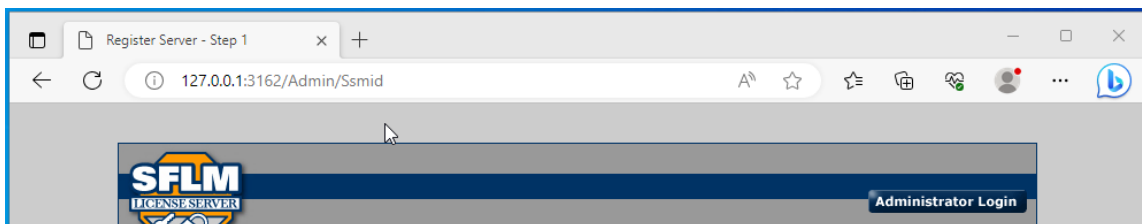
From within “Management Console (SMAN)”, you can expand the left pane System > Licensing > Management and select the SFLM server you want to view. In Windows the webpage will be embedded in the SMAN window.

If you have multiple servers configured, you can view these in SMAN as well (System >Licensing >Management).

Silvaco Software and License Installation Instructions



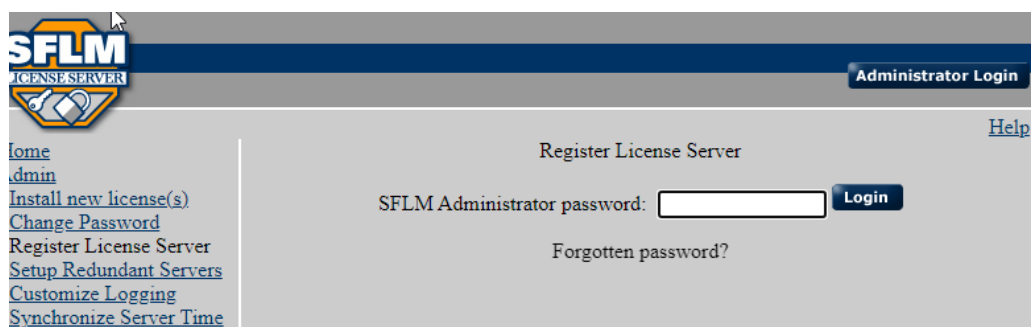
- Viewing the SFLM server page using a browser:
Open any browser and you can view the page by the name of the machine, its IP address, or via the loop back address if you are logged into the license server.
 - http://<Machine_Name>:3162
 - http://<Machine_IP>:3162
 - <http://127.0.0.1:3162>



2. Registering SFLM server (online or offline)

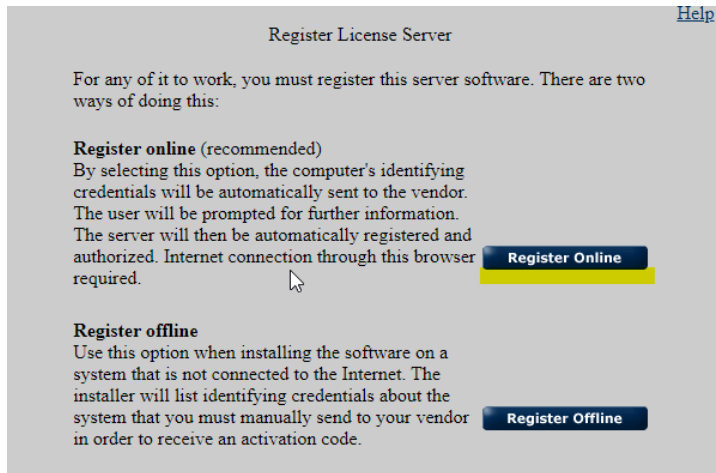
Online Registration

1. Use the SFLM administrative password set during the SFLM Server Installation step to log in.



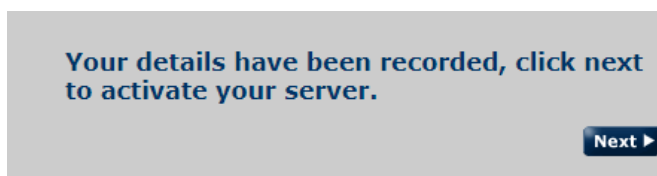
Silvaco Software and License Installation Instructions

2. Click the Register Online button.

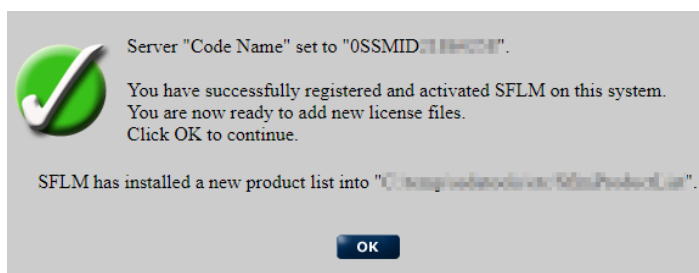


3. Complete the fields on the following page, once complete click the Next button.

4. A confirmation page will load if done correctly, then click Next to continue.



5. The next page will display a server "Code Name" or HOSTIDs in the form OSSMID#####.

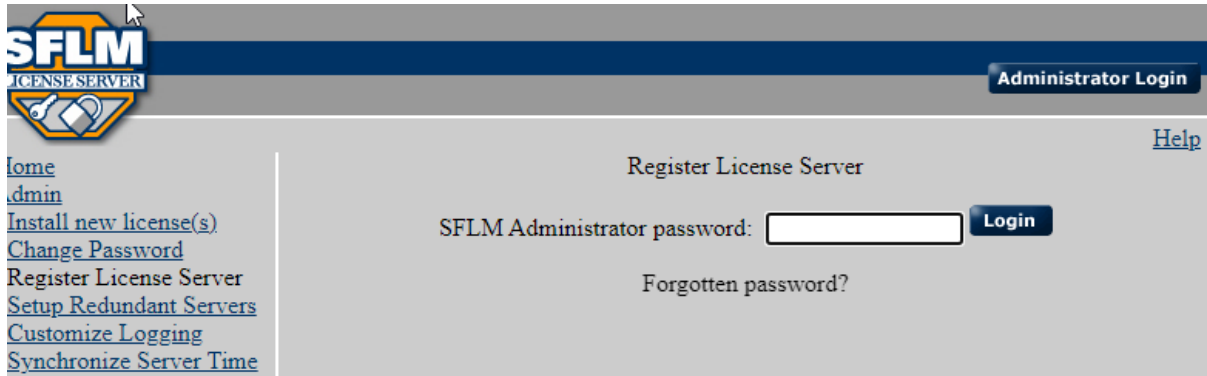


6. Send the OSSMID ID to Silvaco for a license to be issued. Once a license has been issued, follow the "Installing SFLM License File" instructions.

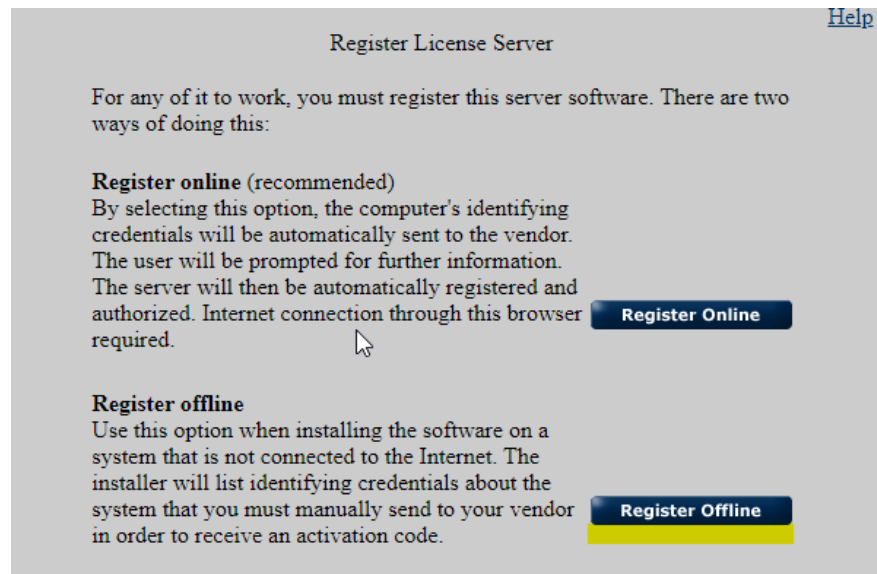
Offline Registration

For SFLM servers not connected to the internet, the SFLM registration may be completed offline. However, whenever possible, online registration is recommended.

1. Enter SFLM administrative password set during the SFLM Server Installation step.



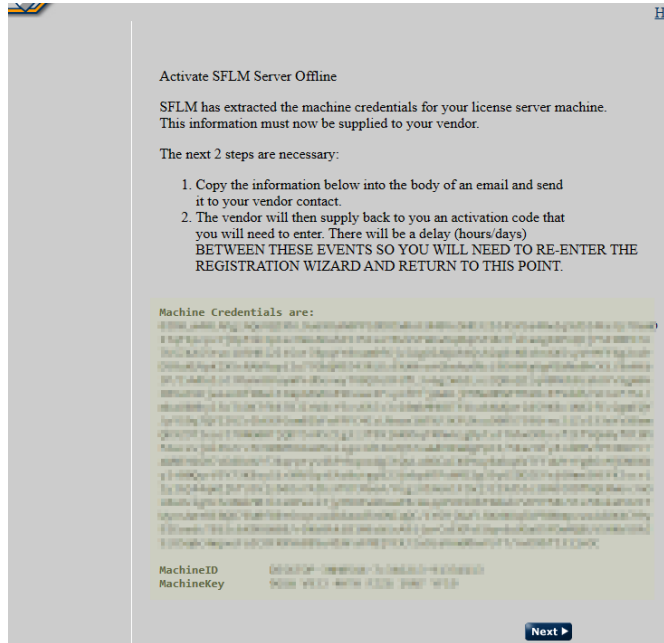
2. Click the Register Offline button.



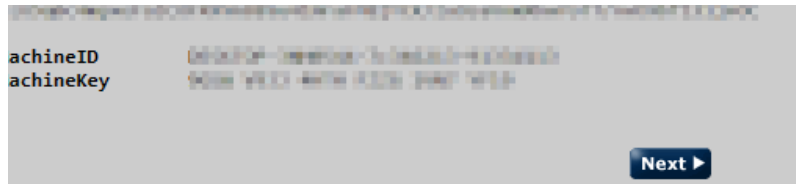
Silvaco Software and License Installation Instructions

- Copy the displayed registration information (machine credentials, machine ID, and machine keys) in full and email it as text to Silvaco.

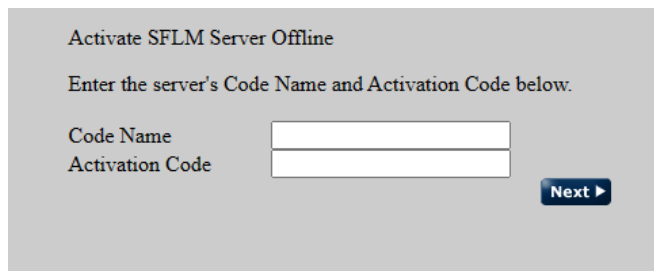
Silvaco will return the code name and activation code. With this code name and activation code, registration can be completed.



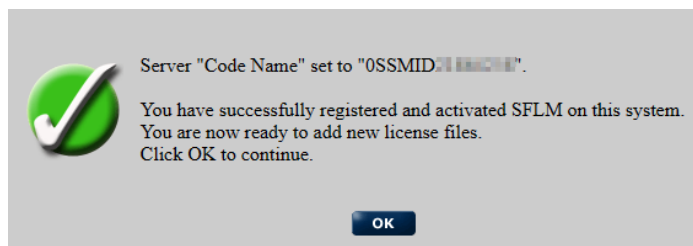
- Select Next on the Activate SFLM Server Offline page.



- Enter the code name and activation code for the server and then click Next.



- If registration was successful, the HostID (for example: OSMID#####) will appear.

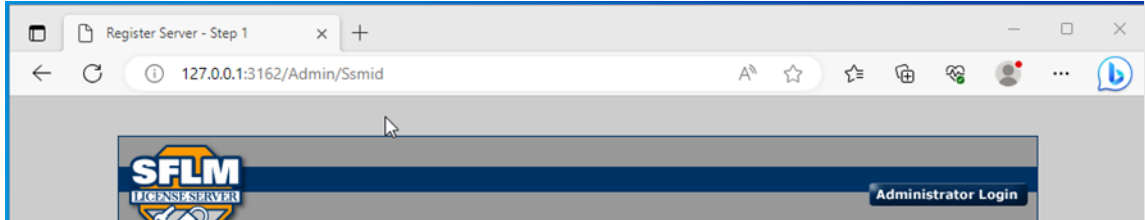


Silvaco Software and License Installation Instructions

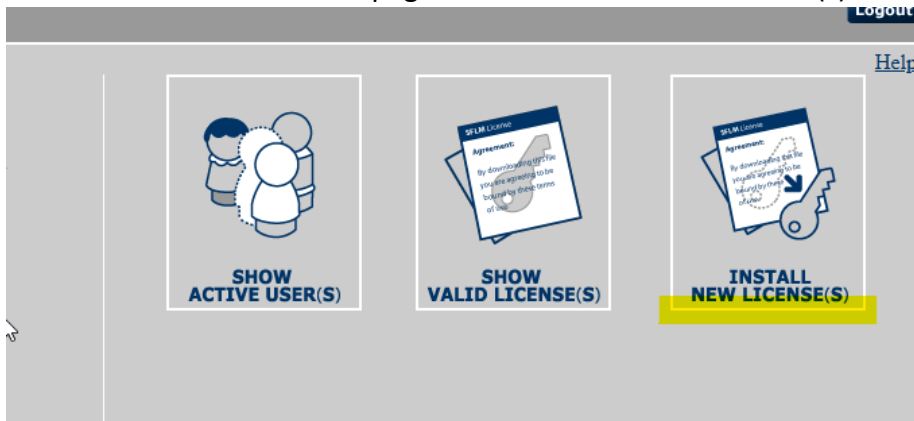
Installing SFLM License File

Once a license has been generated by Silvaco, users have two ways to install it: manual or automatic.

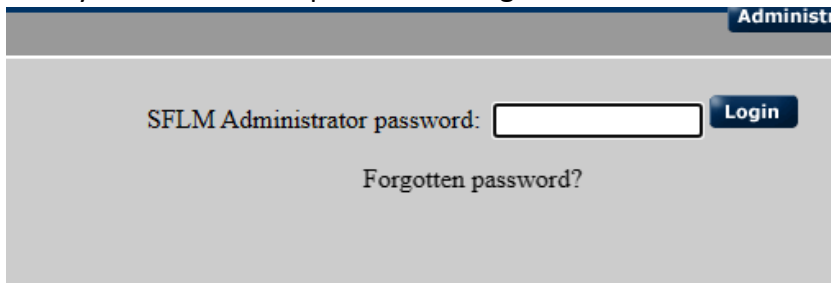
- Go to your existing SFLM server webpage, for example http://<Machine_Name>:3162, http://<Machine_IP>:3162, or <http://127.0.0.1:3162>.



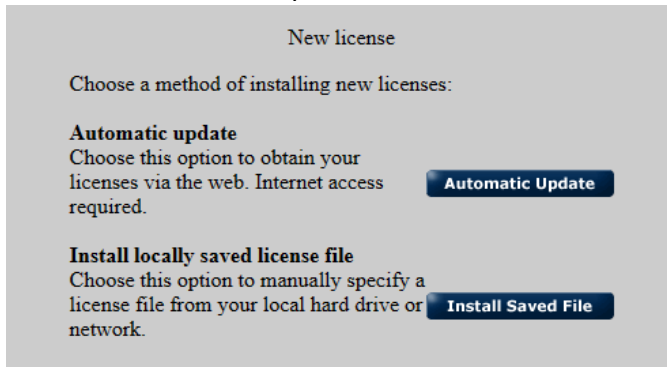
- Once on the SFLM main webpage click the “Install New License(s)” button.



- Enter your SFLM admin password to login.



- Click the “Automatic Update” or “Installed Saved File” button.



- Selecting “Automatic Update” will download the license file from the internet and install it to your SFLM server automatically.

Silvaco Software and License Installation Instructions

- Selecting “Installed Saved File” will allow the user to select a license file from their machine to be installed on the SFLM server.

The SFLM web page will confirm a successful installation and the valid licenses will be viewable within the SFLM web page.

- **Connecting Client to Existing SFLM Server**

If an SFLM license server already exists, users can set up their client machine to connect to the license server.

Linux

1. In a Linux terminal type:
<Install_Directory>/bin/sflm_access
Replace <Install Directory> with Silvaco Install Directory.
For example, if the install directory is /opt/sedatools:

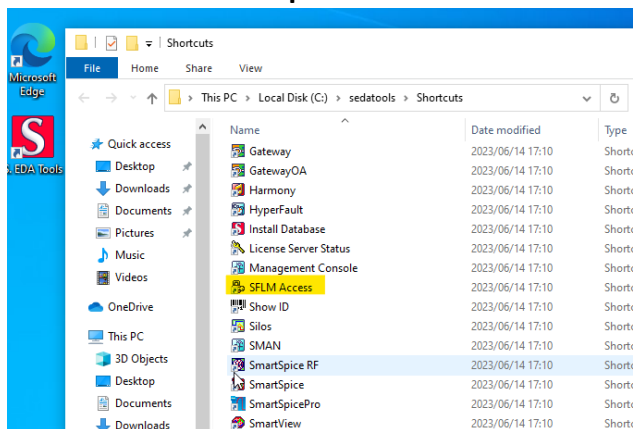
```
/opt/sedatools/bin/sflm_access
```

Windows

2. In Windows PowerShell enter the below command or click “SFLM Access” in desktop shortcut folder.
 - <Install_Directory>\exe\sflm_access
 - Replace <Install Directory> with the Silvaco install directory.
 - For example, if the install directory is C:\sedatools:

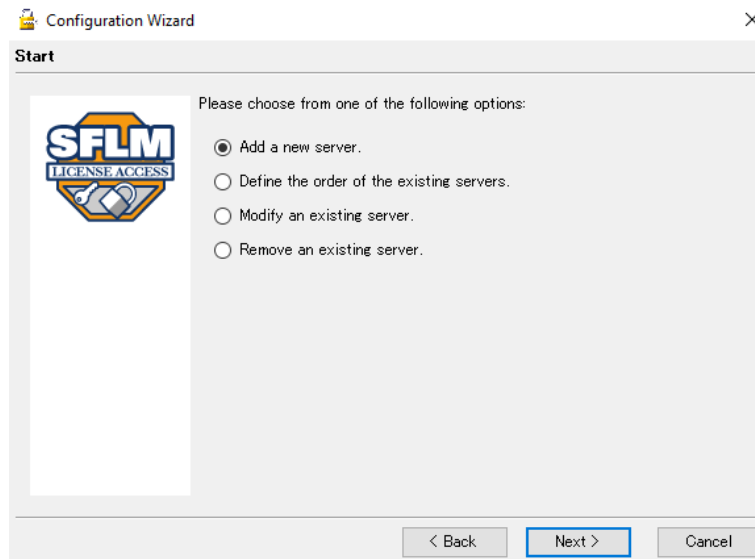
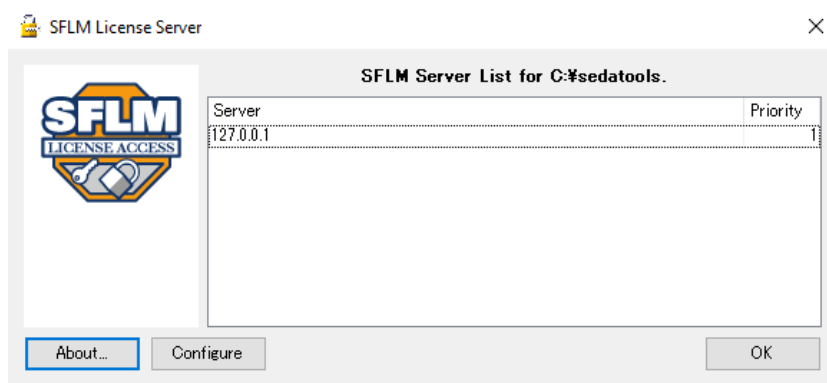
```
C:\sedatools\exe\sflm_access
```

“SFLM Access” desktop shortcuts in S.EDA Tools on desktop



Silvaco Software and License Installation Instructions

Within the SFLM Access interface, the Configure button will open a wizard from which you can add a new server. Follow the wizard or read Chapter 4 of the Standard Floating License Manager: Installation and User's Guide for more details on how to use SFLM Access.



Installation of Viso

Viso is a package that contains only Viso as a tool. It contains neither Belledonne nor Brenner. Viso as a standalone package starts from 2023.1 version.

If you install the Viso package, you cannot use the Viso tool in it in conjunction with Belledonne or Brenner.

You need to install Alps if you want to use Viso in conjunction with Belledonne (up to 2022.1 version).

A .bin package is the primary installation package (where a .ssu is an update).

NOTE: For Viso 2023.1, only .ssu can be provided as of today.

NOTE: For Viso, you do not need to install a .bin before a .ssu, but this is not necessarily the case for other Silvaco products.

A Viso .ssu installation package can be requested on your behalf by a Silvaco FAE. Once approved for download, a link to the download site will be emailed to you. The download will also be available on the Silvaco website (Support > My Downloads). Click the "Download" button to access the package.

1. Download the following package file: AAAA-viso-BBBB-C-D-E-rh64.ssu (for example: 21203-viso-2023-1-69-R-rh64.ssu).

Copy it into a directory of your choice (e.g., under /tools/vendors/Silvaco). You can copy the tree where other Silvaco tools are already installed.

2. Run the following command "tar -xvzf" the .ssu file.

It will unzip into an <installation_path>/lib/viso/<W.X.Y.Z>/x86_64-linux/edxact set of directories.

Note: W.X.Y.Z may vary. For example: 2023.1.69.R is version 2023, sub version 1, sub-sub version 69. ".R" is release.

3. From the installation path (for example: installPath = /tools/vendors/Silvaco):

Set the VISO_ROOT environment variable so that it points to the edxact directory:

```
<installPath>/lib/viso/<W.X.Y.Z>/x86_64-linux/edxact
```

Example: setenv VISO_ROOT /tools/vendors/Silvaco/lib/viso/<W.X.Y.Z>/x86_64-linux/edxact

4. Update the PATH environment variable (using export or setenv command) so that it includes folder: \$VISO_ROOT/bin

Example: setenv PATH \$VISO_ROOT/bin:\$PATH

5. From this point Viso should be accessible.

Run the following command from a terminal:

"viso -version" to check that "viso" can be started.

Silvaco Software and License Installation Instructions

6. Documentation and tutorial are located in \$VISO_ROOT/doc.

7. Setting the license file by running the command:

setenv LM_LICENSE_FILE to point to the license

The application is now installed. In case of any issues, contact support@silvaco.com.

Installation of Jivaro .bin Package

NOTE: A .bin package is the primary installation package (while a .ssu is an update).

NOTE: For Jivaro, you do not need to install a .bin before a .ssu, but this is not necessarily the case for other Silvaco products.

The installation package can be downloaded from the Download section (www.silvaco.com -> Support -> Downloads -> Software Request). Once the installation package has been requested, an email with a download link will be sent.

1. Obtain the .bin package.

Go to www.silvaco.com -> Support -> Downloads -> Software Request. Download the latest baseline installation. The file typically has a name format like: AAAA-jivaro-BBBB-CC-rh64.bin (for example: 233201-jivaro-2023-01-rh64.bin).

2. Copy to target directory.

Copy the downloaded .bin file to the target directory where you intend to install Jivaro.

Make sure the copied binary file has executable permissions. You can do this using the command “`chmod +x filename.bin`” in a terminal window.

3. Initiate installation. Execute the binary file to begin the installation process.
4. Follow Silvaco Installer GUI. Upon execution, a graphical user interface (GUI) labeled "Silvaco Installer" will appear. Follow the prompts and directions provided by the installer to proceed with the installation.
5. Choose installation path.
6. Ignore any message prompting you to use root privileges during the installation process.
7. Set environment variables.

Set the JIVARO_ROOT environment variable to point to the appropriate directory, for example:
`setenv JIVARO_ROOT <installation_path>/lib/jivaro/<W.X.Y.Z>/x86_64-linux/`

Note: Replace <installation_path> and <W.X.Y.Z> with the actual installation path and version numbers, respectively.

8. Update the PATH environment variable to include the Jivaro executable directory:

```
setenv PATH $JIVARO_ROOT/bin:$PATH
```

9. Jivaro and Jivaro Pro are now accessible.

Silvaco Software and License Installation Instructions

From a Unix terminal, run the following commands:

"jivaro -version" to check that "jivaro" can be triggered

"jivaro -pro -version" to check that "jivaro Pro" can be triggered

10. Documentation and tutorial are located in \$JIVARO_ROOT/doc

11. Set the license file:

setenv LM_LICENSE_FILE (or EDXACT_LICENSE_FILE)

to point to the license.

After that the application is installed. In case of any issues, contact support@silvaco.com.

Installation of Jivaro Update (.ssu)

NOTE: A .bin package is the primary installation package (while a .ssu is an update).

NOTE: For Jivaro, you do not need to install a .bin before a .ssu, but this is not necessarily the case for other Silvaco products.

A Jivaro .ssu installation package can be requested on your behalf by a Silvaco FAE. Once approved for download, a link to the download site will be emailed to you. The download will also be available on the Silvaco website (Support > My Downloads). Click the "Download" button to access the package.

1. Download the following package file:
 - AAAA-jivaro-BBBB-C-D-E-rh64.ssu (for example: 21347-jivaro-2023-1-55-R-rh64.ssu)

Copy it into a directory of your choice (e.g., under /tools/vendors/Silvaco). You can copy into the path where other Silvaco tools are already installed.

2. Run the "tar -xvfz" command on the .ssu file
 - This will create an <installation_path>/lib/jivaro/<W.X.Y.Z>/x86_64-linux/ set of directories
 - Note: W.X.Y.Z may vary, version can be identified as follows:

Example: 2023.1.55.R is defined as: version 2023, sub version 1, sub-sub version 55. ".R" means "release"

3. From the installation path (for example: installPath = /tools/vendors/Silvaco):

Set the JIVARO_ROOT environment variable to points to:

<installPath>/lib/jivaro/<W.X.Y.Z>/x86_64-linux/

Example: setenv JIVARO_ROOT /tools/vendors/Silvaco/lib/jivaro/<W.X.Y.Z>/x86_64-linux/

4. Update the PATH environment variable so that it includes \$JIVARO_ROOT/bin

Example: setenv PATH \$JIVARO_ROOT/bin:\$PATH

Silvaco Software and License Installation Instructions

5. Jivaro and Jivaro Pro are now accessible.

From a Unix terminal, run the following commands:

"jivaro -version" to check that "jivaro" can be triggered

"jivaro -pro -version" to check that "jivaro Pro" can be triggered

6. Documentation and tutorial are located in the following folder: \$JIVARO_ROOT/doc

7. Set the license file by running the command:

```
setenv LM_LICENSE_FILE /path/to/license
```

After that the application is installed. In case of any issues, contact support@silvaco.com.

Installation of CellForge

The installation package can be downloaded from the Download section (www.silvaco.com -> Support -> Downloads -> Software Request). Once the installation package has been requested, an email with a download link will be sent.

Read through this section before installing the product.

To install the tool suite, use the install self-extractable archives to unpack the software and perform the installation routine.

Run the installation package, where <version> should match the downloaded file:

```
shell> ./11232-tool_suite-<version>.bin
```

Read and accept Silvaco Software License Agreement.

Define the absolute installation path. The default is the current directory.

After completing those steps, CellForge will be successfully installed on your system. Next configure the FlexLM license server for CellForge and the layout editor.

1. Silvaco license installation.

Silvaco CellForge software uses the FlexLM license manager, a popular license management solution used in the software industry.

This section provides detailed instructions for setting up a FlexLM-based license server. Procedures are given for Linux operating systems. Consult your system administrator if you are not familiar with Unix setup commands.

The following list summarizes the detailed instructions:

1. Update the SERVER and DAEMON lines in the license.lic file.
2. Verify that the host name and HostID are correct.
3. Start the server license manager daemon.
4. Verify that the Silvaco license daemon is running, and that the authorization is correct using the `lmstat` utility.

The Silvaco software license key is emailed directly to licensed users. If you cannot find the licensing information, contact Silvaco Customer Support or your local sales representative.

Silvaco Software and License Installation Instructions

2. Setting up the license server.

To set up your license server:

- Copy and paste the licensing key you received from Silvaco or enter the information from it into a license.dat file. The license file can reside anywhere in your system. Next, open the license.dat file and edit the following information:

- Update the SERVER entry with your server host name. The syntax of this line is:

“SERVER host_name host_id 1710” where host name is the host name of your license server

- Verify that your host ID is correct using the following command to display its value:

```
shell> <install_dir>/flexlm_dist/lmutil lmhostid
```

- Update the daemon line to the full Silvaco license daemon (simucad) path:

```
daemon simucad <install_dir>/flexlm/.../simucad
```

2. Set SIMUCAD_LICENSE_FILE environment variable to point to the local copy of your license.lic file using the options below.

- From C Shell:

```
shell> setenv SIMUCAD_LICENSE_FILE path_to_license_file
```

- From other shell:

```
shell> export SIMUCAD_LICENSE_FILE=path_to_license_file
```

- Verify your license path through the following command at the shell prompt:

```
shell> echo $SIMUCAD_LICENSE_FILE
```

- Set SIMUCAD_LICENSE_FILE to start up automatically when you log in by setting this environment

variable in your shell startup script: .bashrc, .cshrc, .kshrc, or .profile files.

3. Start the license manager.

Starting the server license manager daemon automatically starts the license daemon. To prevent security violations, make sure you are not logged into the root account.

Start the server license daemon by entering the following command:

```
shell> <install_dir>./bin/lmgrd -c $SIMUCAD_LICENSE_FILE -l /usr/tmp/
```

```
flexlm.log &
```

Silvaco Software and License Installation Instructions

In the above command, the `-l` switch specifies a destination for the FlexLM log file, and the `-c` switch specifies that your license file will be used.

Note: If you see the message “Vendor daemon can’t talk to lmgrd (cannot read data) - FlexLM error” when you attempt to start the license daemon, see Troubleshooting license problems section.

Use the following command to check that the Silvaco license daemon is running and that the correct number of licenses is available:

```
shell> <install_dir>/flexlm_distr/lmutil lmstat -a
```

You should see a message like the following. No errors should be reported.

```
lmutil - Copyright (C) 1989-2016 Flexera Software LLC. All Rights Reserved.
```

```
Flexible License Manager status on Mon 1/18/2024 11:36
```

```
License server status: port_number@host_name
```

```
License file(s) on servername: full_license_file_path
```

```
servername: license server UP (MASTER) v11.19.2
```

```
Vendor daemon status (on servername):
```

```
simucad: UP v11.19.2
```

```
Feature usage info:
```

```
Users of toolname: (Total of “n “licenses available)
```

If you have installation or licensing problems, refer to Troubleshooting license problems section.

4. End user environment setup

Users of Silvaco CellForge must have the `SIMUCAD_LICENSE_FILE` variable configured, pointing to `port@hostname` where the license server daemon is running.

5. GDSII layout editor license installation

Files used for Linux systems are contained in directory `<install_dir>/slam/bin`. To set up your

GDSII Editor license server for Linux systems:

- Copy and paste the emailed licensing key information or enter the information from the email into a `license.lic` file. The license file can be saved anywhere.
- Set environment variable `NAN_LICENSE_FILE` to point to the local copy of the `license.lic` file,

Silvaco Software and License Installation Instructions

using one of the options below.

- From a C shell:

```
shell> setenv NAN_LICENSE_FILE path_to_license_file
```

- From other shells:

```
shell> export NAN_LICENSE_FILE=path_to_license_file
```

- Verify the path to your license file by entering the following at the shell prompt:

```
shell> echo $NAN_LICENSE_FILE
```

Set NAN_LICENSE_FILE to start automatically when you log in by including the environment variables in your shell startup script (.bashrc, .cshrc, .kshrc, or .profile).

6. Start the license server.

Starting the server license manager daemon automatically starts the Silvaco license daemon. To prevent security violations, make sure you are not logged into the root account.

- Start the server license daemon by entering the following command:

```
shell> <install_dir>/slam/bin/NGGDSIIEditLD &
```

After issuing the above command, you should see the following messages on the terminal:

```
NGGDSIIEditLD Version 3.0.0 Q1Y05 production
```

```
*** Portions Copyright 1997 – 2025 by Silvaco
```

```
License usage summary interval: 12 hours.
```

```
Using license key file foo.key.
```

```
NGGDSIIEditLD ready to serve licenses for:
```

```
    NGGDSIIEditCore 40 licenses
```

```
    NGGDSIIEditView 40 licenses
```

```
    NGGDSIIEdit 40 licenses
```

```
    physout 40 licenses
```

```
    schematic 40 licenses
```

```
    NGGDSIIEditXTK 40 licenses
```

```
    HDLIN 40 licenses
```

```
    HDLOUT 40 licenses
```

```
    slam-drc 4 licenses
```

Silvaco Software and License Installation Instructions

Once started, the license server will continue to operate until the machine is shut down. You should start it only once. The license server should not be run under the root account.

After the license server is running, query its status by issuing the command:

```
shell> <install_dir>/slam/bin/NGGDSIIEditLSStat
```

This command will query the license server for who is using which features. You can also get a usage summary with:

```
shell> <install_dir>/slam/bin/NGGDSIIEditLSStat --totalUsage
```

7. End user environment setup.

Users of Silvaco GDSII Editor must have the `NAN_LICENSE_FILE` variable configured, pointing to `port@hostname` where the license server daemon is running. Alternatively, the same environment variable can contain the path to the license file.

8. Troubleshoot license problems.

If you have difficulties installing or licensing your Silvaco product, read this section before contacting Silvaco or your local technical support representative.

If `lmstat` reports errors, read the log file `/usr/tmp/lmgrd_ngld.log`. The log file contains information that can help you resolve problems. Repeat the licensing steps as needed.

Some common problems include:

- Typographical errors in the `license.lic` file.
- An improperly set `SIMUCAD_LICENSE_FILE` environment variable.
- Multiple Silvaco license manager daemons (`lmgrd`) executing. In this case, use one of the following commands to list the `lmgrd` processes, kill the older process, and try again.

```
shell> ps -ef | grep lmgrd
```

or

```
shell> ps -auxw | grep lmgrd
```

When contacting Silvaco Customer Support regarding license issues, include the following:

- A copy of your `license.lic` file.
- A `support.log` file. Create the file using these commands:

```
% echo SIMUCAD_LICENSE_FILE > support.log
```

```
% cat /usr/tmp/flexlm.log >> support.log
```

```
% ps -ef | grep lmgrd >> support.log
```

```
% <install_dir>/flexlm/bin/<architecture>/lmutil lmstat -a >> support.log
```

Based on your system environment, you might need to use the `ps -auxw` command instead of the `ps -ef` command; the rest of the command line remains the same.

Installation of Viola

Installation of Viola baseline package is the same as for the Silvaco software. The licensing installation and setup are different.

Silvaco's CellForge, Liberty Analyzer, and Viola products all use FlexLM based licensing, and they can all be provided in the same software license key.

This section gives detailed instructions for setting up a FlexLM-based license server. Consult your system administrator if you are not familiar with Unix setup commands.

The following list summarizes the detailed instructions:

- Update the SERVER and VENDOR lines in the license.dat file.
- Verify that the host name and HostID are correct.
- Start the server license manager daemon.
- Verify that the Silvaco license daemon is running, and that the authorization is correct using the lmstat utility.

1. Set the license variable.

To pass information about the Silvaco license file, create the following entry in file Install.cfg in directory <install dir>/etc/:

```
SIMUCAD_LICENSE_FILE=<license file>
```

Or, if you are using Simucad license:

```
SIMUCAD_LICENSE_FILE=<license file>
```

The file uses /bin/sh syntax (variable=value).

This variable points to the Silvaco license file in standard FlexLM LM_LICENSE_FILE variable format. For details, refer to FlexLM documentation.

2. Set up the license server

To set up your license server:

- Copy and paste the licensing key you received from Silvaco or enter the information from it into a license.dat file. The license file can be saved anywhere. When you enter the information:
- Update the SERVER line in the license.lic file with the host name of your server. The syntax of a SERVER line entry is:

Silvaco Software and License Installation Instructions

```
SERVER host_name host_id 1710
```

where host_name is the host name of your license server.

- To verify that the HostID is correct, enter the following command to display the server's HostID:

```
shell> <install_dir>/flexlm_distr/lmutil lmhostid
```

- Update the DAEMON line in license.dat to the full path for the Silvaco license daemon (ngld):

```
VENDOR ngld <install_dir>/flexlm_distr/ngld
```

4. Set the NGLD_LICENSE_FILE environment variable to point to the local copy of the license.dat file using one of the options below.

From a C shell:

```
shell> setenv NGLD_LICENSE_FILE path_to_license_file
```

From other shells:

```
shell> NGLD_LICENSE_FILE=path_to_license_file
```

```
shell> export NGLD_LICENSE_FILE
```

5. Verify the path to your license file by entering the following at the shell prompt:

```
shell> echo $NGLD_LICENSE_FILE
```

- Set your SIMUCAD_LICENSE_FILE to start automatically when you log in by setting the NGLD_LICENSE_FILE environment variable in your shell startup script (.bashrc, .cshrc, .kshrc, or .profile file).

6. Start the license manager.

Starting the server license manager daemon automatically starts the license daemon. To prevent security violations, make sure you are not logged into the root account.

- Start the server license daemon by entering the following command:

```
shell> <install_dir>/flexlm_distr/lmgrd -c $NGLD_LICENSE_FILE -l /usr/tmp/lmgrd_ngld.log &
```

In the above command, the -l switch specifies a destination for the FlexLM log file, and the -c switch specifies that your license file will be used.

Note: If you see the message "Vendor daemon can't talk to lmgrd (cannot read data) - FlexLM error" when you attempt to start the license daemon, see Troubleshooting section 3.5.

Silvaco Software and License Installation Instructions

- Use the following command to check that the license daemon is running and that the correct number of licenses is available:

```
shell> <install_dir>/flexlm_distr/lmutil lmstat -a
```

You should see a message like the following. No errors should be reported.

```
lmutil - Copyright (C) 1989-2016 Flexera Software LLC. All Rights Reserved.
```

```
Flexible License Manager status on Mon 1/18/2024 11:36
```

```
License server status: port_number@host_name
```

```
License file(s) on servername: full_license_file_path
```

```
servername: license server UP (MASTER) v11.14.1
```

```
Vendor daemon status (on servername):
```

```
ngld: UP v11.14.1
```

```
Feature usage info:
```

```
Users of toolname: (Total of n licenses available)
```

- If you have installation or licensing problems, refer to Troubleshooting License Problems on Section 3.5.

7. End user environment setup.

End users must have the `NGLD_LICENSE_FILE` variable configured, pointing to `port@hostname` where the license server daemon is running.

8. Troubleshoot license problems.

If you have difficulties installing or licensing your Silvaco product, read this section before contacting Silvaco or your local technical support representative.

If `lmstat` reports errors, read the log file `/usr/tmp/lmgrd_ngld.log`. The log file contains information that can help you resolve problems. Repeat the licensing steps as needed. Some common problems include the following:

- Typographical errors in the `license.dat` file.
- An improperly set `NGLD_LICENSE_FILE` environment variable.
- Multiple Silvaco license manager daemons (`lmgrd`) executing. In this case, use one of the following commands to list the `lmgrd` processes, kill the older process, and try again.

Silvaco Software and License Installation Instructions

```
shell> ps -ef | grep lmgrd
```

or

```
shell> ps -auxw | grep lmgrd
```

When contacting Silvaco Customer Support regarding license issues, include the following:

- A copy of your license.dat file.
- A support.log file. Create the file using these commands:

```
% echo $NGLD_LICENSE_FILE > support.log
```

```
% ps -ef | grep lmgrd >> support.log
```

```
% ps -ef | grep nglD >> support.log
```

```
% <install_dir>/flexlm_distr/lmutil lmstat -a >> support.log
```

Based on your system environment, you might need to use the `ps -auxw` command instead of the `ps -ef` command; the rest of the command line remains the same.

Installation of PEX Certify

A .bin package can be downloaded from the Download section of the Silvaco website (Resources > Download > Software Request). Once approved for download, a link to the download site will be emailed to you. The download will also be available on the Silvaco website (Resources > Download > My Personal Downloads). Click the "Download" button to save the package.

1. Retrieve the AAAA-pexcertify-BBBB-C-D-E-rh64.bin tree (e.g, 21473-pexcertify-2024-1-164-R-rh64.ssu) and copy it under a directory of your choice (e.g., /tools/vendors/Silvaco). Make sure the copied binary file has executable permissions.
2. Execute the binary file to begin the installation process. Follow the prompts and directions provided by the installer to proceed with the installation. Note: Ignore any message prompting you to use root privileges during the installation process.
3. Set the PEXCERTIFY_ROOT environment variable so that it points to the "/x86_64-linux/" directory. For example:

```
setenv PEXCERTIFY_ROOT /tools/vendors/Silvaco/lib/pexcertify/<W.X.Y.Z>/x86_64-linux/
```
4. Update the PATH environment variable so that it includes the folder: `$PEXCERTIFY_ROOT/bin`. For example:

```
setenv PATH $PEXCERTIFY_ROOT/bin:$PATH
```

5. PEX Certify is installed. Run the following command from a terminal to confirm the version:
6. `pexcertify -version`
7. Set the `LM_LICENSE_FILE` environment variable so that it points to the license file delivered.

A .ssu package is an update (where a .bin is a baseline).

Note: there is no need to install a .bin before a .ssu.

Installation of PEX Certify(.SSU)

A .ssu package can be requested on your behalf by Silvaco FAE. Once approved for download, a link to the download site will be emailed to you. The download will also be available on the Silvaco website (Resources > Download > My Personal Downloads). Click the "Download" button to save the package.

1. Retrieve the AAAA-pexcertify-BBBB-C-D-E-rh64.ssu tree (e.g, 21473-pexcertify-2024-1-164-R-rh64.ssu) and copy it under a directory of your choice (e.g., /tools/vendors/Silvaco).
2. Run the following command "tar -xzf" on the .ssu file. It will lead to an <installation_path>/lib/pexcertify<W.X.Y.Z>/x86_64-linux/ set of directories.
3. Set the PEXCERTIFY_ROOT environment variable so that it points to the "/x86_64-linux/" directory. For example: `setenv PEXCERTIFY_ROOT /tools/vendors/Silvaco/lib/pexcertify/<W.X.Y.Z>/x86_64-linux/`
4. Update the PATH environment variable so that it includes the folder: `$PEXCERTIFY_ROOT/bin`. For example: `setenv PATH $PEXCERTIFY_ROOT/bin:$PATH`
5. PEX Certify is now installed. Run the following command from a terminal to verify the version: `pexcertify -version`
6. Set the `LM_LICENSE_FILE` environment variable so that it points to the license file delivered.

Installation of Visolyze

A .bin package can be downloaded from the Download section of the Silvaco website (Resources > Download > Software Request). Once approved for download, a link to the download site will be emailed to you. The download will also be available on the Silvaco website (Resources > Download > My Personal Downloads). Click the "Download" button to save the package.

1. Retrieve the AAAA-visolyze-BBBB-C-D-E-rh64.bin tree (e.g: 21473-visolyze-2024-1-164-R-rh64.ssu) and copy it under a directory of your choice (e.g., /tools/vendors/Silvaco). Make sure the copied binary file has executable permissions.
2. Execute the binary file to begin the installation process. Follow the prompts and directions

Silvaco Software and License Installation Instructions

provided by the installer to proceed with the installation. Note: Ignore any message prompting you to use root privileges during the installation process.

3. Set the VISOLYZE_ROOT environment variable so that it points to the "/x86_64-linux/" directory. For example: `setenv VISOLYZE_ROOT /tools/vendors/Silvaco/lib/visolyze/<W.X.Y.Z>/x86_64-linux/`
4. Update the PATH environment variable so that it includes the folder: \$VISOLYZE_ROOT/bin. For example: `setenv PATH $VISOLYZE_ROOT/bin:$PATH`
5. Visolyze is now installed. Run the following command from a terminal to verify the version: `visolyze -version`
6. Set the LM_LICENSE_FILE environment variable so that it points to the license file delivered.

A .ssu package is an update (where a .bin is a baseline).

Note: there is no need to install a .bin before a .ssu.

Installation of Visolyze (.SSU)

A .ssu package can be requested on your behalf by Silvaco FAE. Once approved for download, a link to the download site will be emailed to you. The download will also be available on the Silvaco website (Resources > Download > My Personal Downloads). Click the "Download" button to save the package.

1. Retrieve the AAAA-visolyze-BBBB-C-D-E-rh64.ssu tree (e.g, 21473-visolyze-2024-1-164-R-rh64.ssu) and copy it under a directory of your choice (e.g.: /tools/vendors/Silvaco).
2. Run the following command "tar -xzf" on the .ssu file. It will lead to an <installation_path>/lib/visolyze/<W.X.Y.Z>/x86_64-linux/ set of directories.
3. Set the VISOLYZE_ROOT environment variable so that it points to the "/x86_64-linux/" directory. For example: `setenv VISOLYZE_ROOT /tools/vendors/Silvaco/lib/visolyze/<W.X.Y.Z>/x86_64-linux/`
4. Update the PATH environment variable so that it includes the folder: \$VISOLYZE_ROOT/bin. For example: `setenv PATH $VISOLYZE_ROOT/bin:$PATH`
5. Visolyze is now installed. Run the following command from a terminal to verify the version: `visolyze -version`
6. Set the LM_LICENSE_FILE environment variable so that it points to the license file delivered.

FAQ

Q1: How to report the environment in which an issue or error occurs?

A1: Sometimes Silvaco will request a Silvaco Report to help with any software issues you may have. This can be generated by users by following the instructions below:

1. Open SMAN (Management Console)

*Start sman by entering 'sman' in terminal or console.

If you get an error such as "Command not found", enter the full path.

e.g., Installation directory: /opt/sedatools (Linux)

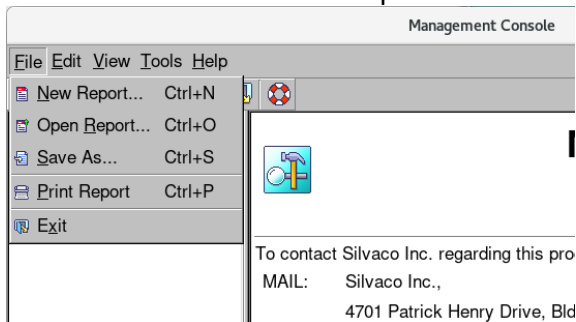
/opt/sedatools/bin/sman

Installation directory: c:\sedatools (Windows)

c:\sedatools\exe\sman.exe

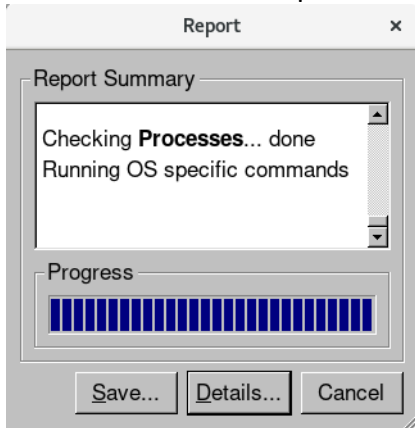
*Start sman by clicking a desktop shortcut: 'SMAN' or 'Management Console'.

2. Click 'File' and select 'New Report'.



3. Save the report to the file (*.rpt) by clicking the 'Save' button.

* You can see the report file by clicking the 'Details' button before clicking 'Save'.



Q2: How to get the log files in SFLM?

A2: You can get SFLM usage logs (Yearly, Monthly, Daily) in SFLM Logging Directory.

1. Open SFLM License Management Web on License server.

http://<license_server>:3162

2. Click 'Customize Logging' in 'Admin' in the left menu.

3. Enter the password for the SFLM admin login.

Silvaco Software and License Installation Instructions

4. Select Item/level in 'License Usage Logging Mode'.

**Recommend Item/level is 'AllLogging'

**You can select the output directories (SFLM Logging Directory), but it is recommended not to change the default.

5. Click 'Save Changes'

Q3: How to load/renew (update) license file in the SFLM license server?

A3: You can load/renew a license file as follows:

1. Open SFLM License Management Web on the license server.

http://<license_server>:3162

2. Click 'Install New License(s)'.

3. Enter SFLM admin password.

4. Click 'Automatic Update', or 'Install Saved File'.

If you are using a browser that can access the internet, click 'Automatic Update' (recommend).

If you are using a browser that can't access the internet and you have a correct license file, click 'Install Saved File'.

Q4: How to get the active license status in SFLM License Server?

A4: You can check the active license status as follows:

1. Open SFLM License Management Web on the license server.

http://<license_server>:3162

2. Click 'Show Valid License(s)'.

Q5: How to get the usage status in SFLM License Server?

A5: You can check the license status as follows:

1. Open SFLM License Management Web on the license server.

http://<license_server>:3162

2. Click 'Show Valid License(s)'.

Q6: How to reset the admin password for SFLM?

A6: Run `sflm -stop`, then `sflm -set-password`, followed by `sflm -start` on the machine where SFLM was originally installed.

Q7: Can't get a license from SFLM License Server, what is the cause and how to fix it?

A7: Possible causes are as follows.

The license file is not installed.

1. Open license server web interface:

<http://<License Server>:3162>

2. Check that the correct license file name is displayed in "License Files:" at the bottom of the page.

Silvaco Software and License Installation Instructions

License file is not valid.

Check whether the machine ID in the license file and the license file displayed on the SFLM license server web interface is the same.

MachineID is no longer valid.

1. Open license server web interface.
`http://<License Server>:3162`
2. Check if the error “MachineID is disabled” is displayed on ‘Home’ of the SFLM web interface.

Firewall blocks licensing communication.

See ‘Q8: Communication Error has occurred, and operation is not working properly. What is the cause and how to fix it?’

Q8: A communication error has occurred, and the license server is not operating properly. What is the cause and how to fix it?

A8: Make sure the following ports are open in the firewall:

3162/TCP - SFLM server port, required by the SFLM license server.

2809/TCP- SIPC (CORBA standard naming service) port, this is required for interprocess communication.

3162/TCP - SFLM server port, required by the SFLM license server.

31620/TCP - SFLM monitor port, required to allow communication between the applications and the license server.

3050/TCP – Firebird database server port, required by Firebird database server. UTMOST 4 uses this port to communicate with the database.

In the FlexLM license file, the number at the end of the SERVER line is the port number the FlexLM server runs on, this can be changed to any available number.

For more details regarding firewall settings, see the [‘Q10:How to configure Firewall settings?’](#) section in this guide.

Q9: A storage space issue is preventing installation.

A9: During the installation of your .bin file the installer utilizes the /tmp partition of the local machine. If this partition is not large enough (> 5Gig) you will receive a message like the one below:

```
Preparing to install
```

```
WARNING: /tmp does not have enough disk space! Attempting to use // for install base and tmp dir.
```

```
Extracting the JRE from the installer archive...
```

```
Unpacking the JRE...
```

```
Extracting the installation resources from the installer archive...
```

Silvaco Software and License Installation Instructions

The size of the extracted files to be installed are corrupted. Please try to download the installer again and make sure that you download using 'binary' mode. Please do not attempt to install this currently downloaded copy.

If you receive this message, you should identify another disk partition with more disk space and use the below environment variable to point the installer to that directory:

```
export IATEMPDIR="directory"
```

where *directory* is a directory with enough file space for temporary use.

Q10: How to configure firewall settings?

A10: Allow access to a port by doing the following:

Linux Standard Firewall (firewall):

1. Check the firewall status

```
sudo firewall-cmd --state
```

If the firewall is not active, it is not necessary to do the following steps.

2. Check the zone for target network

```
sudo firewall-cmd --get-active-zones
```

3. Allow access to the desired port number in the appropriate zone(public)

```
sudo firewall-cmd --zone=public --add-port=< desired port number> --permanent
```

e.g., SFLM License Server(3162/tcp)

```
sudo firewall-cmd --zone=public --add-port=3162/tcp --permanent
```

4. Reload the firewall to apply the changes

```
sudo firewall-cmd --reload
```

5. Confirm the added rule

```
sudo firewall-cmd --zone=<zone> --list-ports
```

For example, check the allowed ports in the public zone:

```
sudo firewall-cmd --zone=public --list-ports
```

Windows standard firewall (Defender):

1. Open PowerShell with Admin rights.

Refer to '[Q11: How to Open PowerShell with Admin rights?](#)'

2. Create a new inbound rule

Run the firewall configure command (New > NetFirewallRule) for allowing the desired port.

```
New-NetFirewallRule -DisplayName <Service Name> -Direction Inbound  
-LocalPort <desired port number> -Protocol TCP  
-Action Allow -Profile Public
```

```
New-NetFirewallRule -DisplayName "SFLM Server" -Direction Inbound -LocalPort 3162 -Protocol TCP -Action Allow -Profile Public
```

e.g., SFLM Server (Port Number: 3162/tcp)

3. Verify the rule

```
Get-NetFirewallRule | Where-Object DisplayName -like "SFLM Server"
```

FlexLM with Firewall

Edit License file before allowing access to a port in the Linux Standard Firewall (firewall):

1. Decide the port number for vendor daemon(simucad/ngld)

By default, vendor daemon port numbers are automatically assigned from unused ports by lmgrd (FlexLM). However, if you have a firewall enabled, you must assign a unique number to the port.

You can assign a number by adding "port=<unique number>" to the vendor/daemon line in license file.

For example, vendor daemon name is "simucad", desired number is **27001**:

Modify license file.

```
SERVER server1.silvaco.com 00e59078086 27000  
daemon simucad /opt/sedatools/flexlm/11.16.2.R/x86_64-linux/simucad port=27001
```

```
#License
```

```
FEATURE A_Silvaco_Apps simucad xxxxxx-dec-2099 X 99F8B24D0X6E3
```

```
:
```

2. Update Flexlm settings

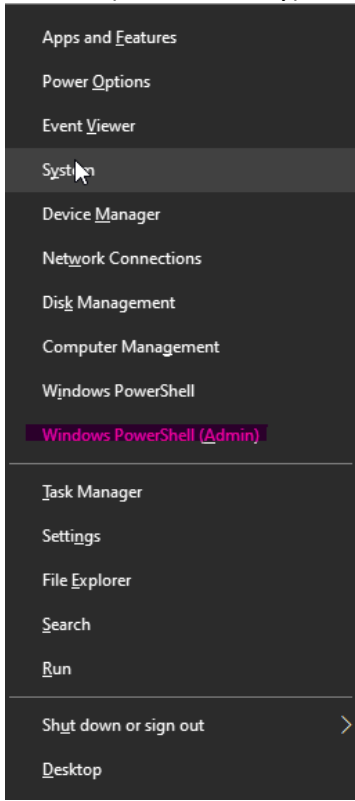
```
/opt/sedatools/bin/lmreread -c /opt/sedatools/license/license.lic
```

3. Register the lmgrd and vendor daemon ports to the firewall using the method described above.

Q11: How to open PowerShell with Admin rights (Windows)?

A11: You can open PowerShell with Admin rights as follows:

Enter “**Windows Key**” + “**X**” key and click “**Windows PowerShell (Admin)**” in the menu.



FlexLM Utility Commands FAQ

Q12: How do I check the license usage and server status using lmstat?

A12: `lmstat`` is used to monitor license usage and server status.

Execute `lmstat -a`` to display the status of all license servers and details about licenses in use.

Example: Run `lmstat -c <path to your license file> -a`` for details on a specific license file.

Additional flags usage for lmstat command:

```
lmstat -c license_file (or port@server) -a | -A | -i | -f <feature>
```

Either the path to the license file or a combination of port number and server name in the format `port@server`. If not specified, the environment variable `SIMUCAD_LICENSE_FILE` or the configuration file `~/flexlmrc` will be referenced. The license file must be accessible and specified with a full path.

Example: If the host's name is `server1` and the port number is `27000`, use `"27000@server1"`.

- a Displays the status of all valid licenses.
- A Displays licenses are currently in use.
- i Displays all licenses listed in the license file, including expired or invalid ones.

Silvaco Software and License Installation Instructions

-f Displays the license information for the specified application. Note: In this tool, features are specified using code names like `Silvaco_X_X_X`.

Q13: What is the process for stopping a license server using `lmdown`?

A13: `lmdown` properly shuts down the license server.

Typically, it's recommended to use server management tools to stop the server.

To stop a server for a specific license file, use `lmdown -c <path to your license_file>`.

In a case when other third party FlexLM services are running and there is a need to stop a service, run the following command: `lmdown -c license_file -vendor vendorname`

Q14: How do I start the license server using `lmstart`?

A14: `lmstart` starts the license server.

This command is generally part of an automatic process during system boot, rather than being used directly.

Example: For manual restarts, if necessary, use server management tools.

Q15: What is `lmutil` and how is it used?

A15: `lmutil` is a versatile command for a variety of license-related operations.

Follow `lmutil` with the desired sub-command (e.g., `lmstat`, `lmdown`).

Example: Execute `lmutil lmstat -a` to run `lmstat` through `lmutil`.

Q16: How do I update a license file in FlexLM service using `lmreread`?

A16: `lmreread` applies changes to the license server when the license file is modified or updated.

Use `lmreread -c [path to your license file]`.

Example: After updating the license file, execute `lmreread -c <license install directory>/<license filename>` to reflect the changes.

Q17: How to show the HostID?

A17: `lmhostid` shows the HostID for the FlexLM license server, and in most cases the HostID is same as the MAC address of the ethernet cards.

Example: Execute `lmhostid -n`.

Q18: How to set up automatic startup via systemd Linux service?

A18: Create a unit file in systemd.

1. Edit the unit file:

- Open a new file: `"/etc/systemd/system/flexlm.service"` using a text editor (e.g., nano, vim, or gedit).
- Add the following to the file: (e.g., install directory is `/opt/sedatools`, license file path is `/opt/licenses/license.dat`, license administrator user is `lmuser`)
- Save and close the file.

2. Set Correct Permissions:

```
[Unit]
Description=FlexLM Service

[Service]
Type=simple
ExecStart=/opt/sedatools/bin/lmgrd -c /opt/licenses/license.dat -l /var/log/flexlm.log
ExecReload=/opt/sedatools/bin/lmutil lmreread -c /opt/licenses/license.dat
ExecStop=${lm_instdir}/lmutil lmdown -c /opt/licenses/license.dat
User=lmuser

[Install]
WantedBy=default.target
```

- Ensure the unit file has the correct permissions:
 - `sudo chmod 664 /etc/systemd/system/flexlm.service`
3. Reload system:
- After creating or modifying a unit file, reload systemd to make it aware of the changes:
- ```
sudo systemctl daemon-reload
```

## SFLM Utility Command FAQ

Q19: How do I display the installed versions of SFLM?

A19: **'sflm -WV'** shows the default version of SFLM server.

Example: Execute 'sflm -WV' on the terminal.

Q20: How do I display the versions of SFLM installed?

A20: **'sflm -WVs'** shows the installed versions of SFLM server.

Example: Execute 'sflm -WVs' on the terminal.

Q21: How do I stop the SFLM server?

A21: **'sflm -stop'** stops SFLM license server.

Example: Execute 'sflm -stop' on the terminal.

Q22: How do I start the SFLM server?

A22: **'sflm -start'** starts SFLM license server.

Example: Execute 'sflm -start' on the terminal.

Q23: How do I show valid licenses?

A23: **'sflm -status'** shows 'valid license'.

Example: Execute 'sflm -status' on the terminal.

Q24: How do I show license usage?

A24: **'sflm -users'** shows 'license usage'.

Example: Execute 'sflm -stop' on the terminal.

Q25: How do I display the MachineID?

A25: 'showid' shows MachineID.

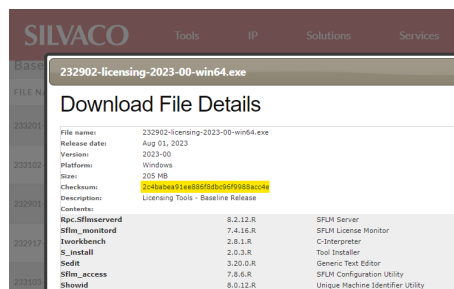
IDs starting with 'OSSMID' are IDs that can be used as license servers.

If it is not displayed, the machine is **unregistered**, or the ID has been disabled due to a change in the machine's status.

Q26: How to verify if the downloaded file is correct?"

A26: You can verify if a downloaded file is correct by comparing the checksum of the downloaded file with the checksum listed on the download page.

When you click on the file name of the download target in "My downloads", the details of the file are displayed, and the **checksum** is listed in it.



And you can get the checksum of the downloaded file by following:

Windows:(On the Windows Powershell)

**Get-Filehash -Algorithm md5 <downloaded file name>**

Linux:(On the Terminal)

**openssl md5 <downloaded file name>**

Q27: How to set up SFLM to autostart on boot (using systemd unit file).

A27: Create a unit file in systemd.

1. Open the file: "/etc/systemd/system/sflm.service" using a text editor (e.g., nano, vim, or gedit).
2. Add the following to the file:

[Unit]

Description=SFLM

After=network.service

[Service]

Type=simple

ExecStart=/opt/sedatools/bin/sflm -start

ExecReload=/opt/seadtools/bin/sflm -start

ExecStop=/opt/sedatools/bin/sflm -stop

RemainAfterExit=yes

[Install]

WantedBy=default.target

# Silvaco Software and License Installation Instructions

---

3. Ensure the unit file has the correct permissions:

```
sudo chmod 664 /etc/systemd/system/sflm.service
```

4. Reload systemd:

After creating or modifying a unit file, reload systemd to make it aware of the changes:

```
sudo systemctl daemon-reload
```

Q28: How to set up automatic startup of SFLM service using rc.local.

A28: To set up SFLM service to boot on start use the following:

In case you want to use /etc/rc.local, open a file: "/etc/rc.local" using a text editor (e.g., nano, vim, or gedit) and add the following line to /etc/rc.local:

```
<install_dir>/sflm -start > /dev/null 2>&1
```

Q29: How to migrate to FlexLM from SFLM

A29: Setup FlexLM and uninstall SFLM in following steps

1. Download the license server package.
2. Install the license server package.
3. Setup FlexLM
  - o See FlexLM Licensing Server in License Server Setup (p.14)
4. Check the license status:
  - o For Linux:
    - Run <installation\_directory>/bin/lmutil lmstat -c <full\_path\_to\_license\_file> -a.
  - o For Windows:
    - Run <installation\_directory>\exe\lmutil.exe lmstat -c <full\_path\_to\_license\_file> -a.
5. Remove the SFLM server:
  - o Once you've confirmed that the license is working correctly in step 4, remove the SFLM server.
  - o For Linux (execute as root user):
    - Run <installation\_directory>/bin/sflm -deinstall.
  - o For Windows (run in Administrator PowerShell):
    - Execute <installation\_directory>\exe\sflm.exe -deinstall.

Set FlexLM Settings to User environment. Connecting to a remote Flexlm licensing server from the application machine.

Set the following in .bashrc for each user

```
export SFLM_FLEXLM=1
export SIMUCAD_LICENSE_FILE=<port_number>@<license_server_host_name>
```

NOTE: Licensing software must be installed on both machines in case of remote access to the license server from the application server. Additionally, make sure that ~/.flexlmrc file is adjusted for the license server.

# Silvaco Software and License Installation Instructions

e.g., license server port is 27000, hostname is license\_server1

```
export SFLM_FLEXLM=1
export SIMUCAD_LICENSE_FILE=27000@ license_server1
```

Q30. How to choose multiple license servers for a specific user.

A30. If the network contains multiple license servers, you can change the SFLM\_SERVERS environment variable to access all of them. For instance, on Unix C-shell:

```
setenv SFLM_SERVERS "MachineA MachineB MachineC"
```

The application in this case will first attempt to get a license from machineA. If it fails, it will try machineB and finally try machineC.

Note: 1. It is important that space exists only between machine names. No space is allowed within one machine's name.

2. Each machine has a full SFLM installation, which is stand alone. This is not a redundant server setup.

3. All the servers need to undergo the Registration process.

Q31. How to combine two FlexLM license files with the same host ID.

A31. In case there is a need to combine license features from one license file with another license to use all the features in both files, it is important that both license files must have the same host ID. You can copy features from a needed license and paste them under the features of your current license. Before creating a combined license file, the license service must be stopped with lmdown command and started again with a newly combined license file.

## Licensing Daemon Changes for FlexLM

Silvaco provides a FlexNet-compatible license file for the products purchased, the necessary binaries, and the edxactd daemon to run the license system.

Starting with version 2024.1 baselines of the following software, it is required to issue a new license (simucad daemon) to move to the new licensing system. Here is a comparison table of changes below:

| Product       | Product Versions     | Daemon  | FlexNet Version |
|---------------|----------------------|---------|-----------------|
| JivaroA (EOL) | 5.9.28 and before    | edxactd | 11.13.1         |
| JivaroD (EOL) | 5.9.98 and before    |         |                 |
| Jivaro        | 2024.1.29 and before |         |                 |
| Belledonne    | 2022.2.36 and before |         |                 |
| Brenner       | 2022.2.36 and before |         |                 |
| Viso          | 2024.1.74 and before |         |                 |
| PEX Diff      | 2024.1.74 and before |         |                 |
| PEX Link      | 2024.1.74 and before |         |                 |

## Silvaco Software and License Installation Instructions

---

|          |                 |         |         |
|----------|-----------------|---------|---------|
| Jivaro   | after 2024.1.29 | simucad | 11.19.2 |
| Viso     | after 2024.1.74 |         |         |
| PEX Diff | after 2024.1.74 |         |         |
| PEX Link | after 2024.1.74 |         |         |

To use the latest software with a simucad daemon, the latest version of FleXLM needs to be installed. The current license server should be stopped (using lmdown command), and the new one installed.